
TWEDDLE BABY HOSPITAL

68th Annual Report

1988

TWEDDLE BABY HOSPITAL

PATRON:	Mrs. Diana Gibson
ACTING PRESIDENT:	Dr. Nigel Hocking, M.B. B.S. (Hons) F.R.A.C.P.
HONORARY SECRETARY:	Mr. A.J. Mangan, A.A.S.A.
HONORARY TREASURER:	Mr. K.C. Hambly F.C.A.
COUNCIL:	Miss E.M. Angliss, M.B.E., Mr. P.R. Angliss, Miss I. Brennan, Mrs. L. Charlton, Mrs. R.R. Downe, Ms. C. Dunn, Mr. K.G. Hambly, Mrs. P.M. Harbeck, Dr. N.W.J. Hocking, Mrs. R. Launder, Mrs. A.M. Lock, Mr. & Mrs. A.J. Mangan, Mrs. E.R. Maskell, Mrs. J. Boyd Mercer, Miss E. O'Connell, Mrs. W.M.K. Stephens, Miss. I. Stephenson.
DIRECTOR OF NURSING:	Ms. B.L. Hassold, B.A. Dip Ed. Dip C.H.N. (T.C.)
HONORARY SOLICITOR:	Mr. V. Adami
AUDITOR:	Mr. N.G. Raven F.C.A.
BANKERS:	Australia New Zealand Bank Limited.

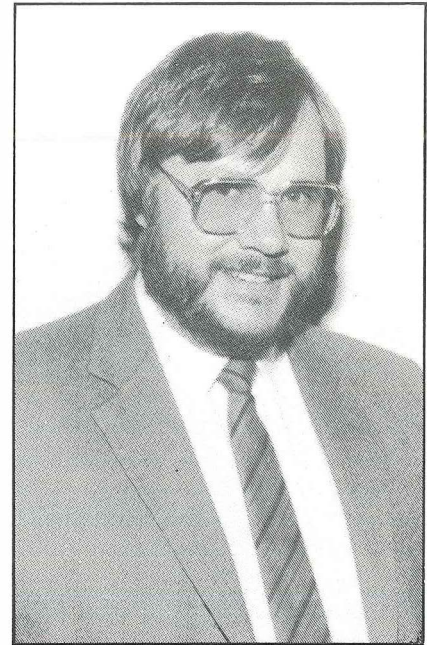
FINANCE AND ADMINISTRATION COMMITTEE

CHAIRMAN:	Dr Nigel Hocking
SECRETARY:	Mr Alan Mangan
TREASURER:	Mr Kenneth Hambly
COMMITTEE:	Mr Peter Angliss, Ms Christine Dunn, Mrs Janet Launder

OBJECTS OF THE HOSPITAL

1. To provide a specialist preventative Health service aimed at supporting and strengthening independent family functioning and the optimal health, growth and development of infants and young children.
 2. To aim for the highest standards of child and family health care and of community health.
 3. To facilitate an integrated approach to families and young children through community consultation, liaison and networking.
 4. To promote the optimal health, growth and development of young children and adults through the provision of information on health and well being to the community and to professionals working in the community.
 5. To provide educational experiences for students in health care services.
 6. To monitor local health needs and to review the service needs of the Western Suburbs to ensure the provision of appropriate services.
 7. To respond to and provide for the care and education needs of young children and the related needs of their families.
-

ACTING PRESIDENT'S REPORT



1988 can be seen as a watershed in the history of Tweddle Baby Hospital. Not only did we have the retirement, after twenty years of dedicated service, of Miss Margot Ballard at the end of 1987, but 1988 has seen major structural and organisational changes within the hospital itself. Prior to Miss Ballard's retirement in 1987, the Finance and Administration Committee, had, with the agreement of the Regional Office, arranged for Drs. Ian Brand and Alan Carmichael, to undertake reviews of the hospital's services with regard to both administration, the provision of services and Tweddle's future role. With major changes occurring within the health fields over the past several years, it was clear that Tweddle needed to review the provision of its own services and to review its administration, in order to continue to provide the best possible service and assistance to the mothers and children for whom this hospital exists.

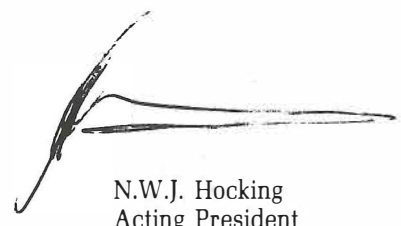
Many of the recommendations contained in those two reports had already been considered by the Finance and Administration Committee and the reports have provided a valuable outline and structure to enable Tweddle to meet the challenges of the future. It has been my great pleasure to see the speed with which many of these recommendations have been implemented, and the improvements within the hospital function, administration and service provision are already apparent.

1988, has thus been a most challenging time for all of those people involved with the hospital. Tweddle was therefore fortunate to obtain the services of an extremely competent, enthusiastic and hard working Director of Nursing in Ms. Betty Hassold, who commenced at the Hospital in January of this year. I extend a warm welcome to Betty who has approached the task of guiding Tweddle's changes with great enthusiasm and competence. I have no doubt that Tweddle remains in excellent hands. I would also like to welcome Ms. Paula Walsh, who was appointed in July of this year, to the position of Charge Nurse to the Children's Unit. Paula's role is to develop clinical services within the hospital. This is a new position, but will greatly assist the Director of Nursing, allowing her to participate more fully in the administrative role of the hospital which is becoming increasingly demanding and important.

Periods of change are often very stressful for all those who must participate in radical reorganisation. Changes are most stressful for the staff of the hospital, both nursing and non-nursing, who are at the sharp end of changes to practices which have been accepted for many years. The demands placed on such staff can be great, as they continue to try and provide the best possible service for the mothers and babies in their care. I believe the staff of Tweddle Baby Hospital have responded with enthusiasm, support and many constructive ideas to the significant changes which have occurred throughout 1988.

Tweddle comes to the end of 1988 with many achievements: the hospital occupancy is higher than it has been in many years, averaging between 60 to 70%. The demand for Tweddle's services is increasing constantly and the productivity of those services has increased significantly. Major changes have included the introduction of computerisation which will result in computerised systems of accounting and subsequently patient management. Significant administrative changes with the introduction of new budgeting procedures and priorities for capital works programs have also occurred. The implementation of these many changes has resulted in significant financial economies to the hospital and I believe the whole organisation can look towards 1989 and beyond with confidence, that we will be able to continue to provide an outstanding service to the parents and children of the western region.

Finally, I would like to express my personal thanks to the other members of the Finance and Administration Committee, upon whom the demands this year have been enormous and to also welcome Mrs. Christine Dunne, who brings to the Finance and Administration Committee many strengths in the provision of Children's Services.



N.W.J. Hocking
Acting President

DIRECTOR OF NURSING'S REPORT



The past twelve months have been an extremely busy and productive time at Tweddle Baby Hospital, as major organisational changes and service and administrative reviews have been undertaken.

In the midst of change the Hospital has maintained its commitment to caring for, and supporting families with young children, through the provision of services that aim to meet individual's and families' needs in flexible, integrated and innovative ways.

A role statement is currently being developed by the organisation in conjunction with the Regional Office, as a basis for service provision and future planning. With regard to service developments, the provision of a fully operational Mothers' and Babies' Unit with a 'rooming-in' facility, has emerged as the area of most urgent need. Currently, mothers are unable to 'room-in' with their young infants, which hinders the development and maintenance of close bonds between mother and baby, while making the acquisition of parenting skills more difficult for the mother. A significant number of families have refused the service because they are unable to 'room-in' with their infants. Discussions have been held with the Regional Office regarding this matter and it is to be hoped that the issue will be resolved in the near future.

Financial planning and control have been major considerations for the Committee and the administration over the past months, and will continue to be a vital factor in the provision and enhancement of services. The response from staff at all levels to the implementation of cost saving measures has been exceptional, especially as the number of patients treated has increased considerably. A building program of minor capital works has been developed, and the Committee and staff look forward to the upgrading and renovation of the physical facilities.

New Occupational Health and Safety Regulations have been introduced. These regulations, in conjunction with the new WorkCare arrangements, have resulted in a planned approach to ensuring employee health and safety in the workplace. A Health and Safety Sub-committee has been established to implement appropriate occupational health and safety procedures and practices at Tweddle.

Data collection and the retrieval and storage of information is an enormous but essential task if the organisation is to operate effectively and efficiently. Increasing Government demands for more detailed financial and statistical information add to the difficulties with regard to processing information. The collection of correct and relevant statistics as a basis for service evaluation and planning and for reporting purposes has been and will be further facilitated by the purchase of a personal computer. Thanks to the administrative and clerical staff who have participated with enthusiasm in reviewing the administrative systems and procedures and for all their efforts with regard to the computerisation of the organisation.

The Hospital has continued and increased its involvement in nurse education. State Enrolled Nurses from Mount Royal Hospital have been accepted for practical experience, and of course, the Hospital continues to provide placement experience for Pre-school Mothercraft Nursing Students from Colleges of TAFE. Work experience students from secondary schools as well as volunteers from the Footscray Volunteer Referral Agency have gained practical experience at the Hospital. It has been particularly satisfying to work with local organisations and groups to provide learning opportunities for people who live in the West.

I wish to extend special thanks to Dr. Nigel Hocking and all members of the Finance and Administration Committee for their support and work on behalf of Tweddle Baby Hospital. Particular thanks to Mr. Bill Jamieson, our Public Relations Officer, who retired this year after many years of service on the Committee. Thank you to the donors and volunteers who have so generously supported the organisation with their time and labour. It has been much appreciated and has benefited the families we serve.

A number of staff changes have occurred including the appointment of a Charge Nurse. Ms. Paula Walsh is warmly welcomed to Tweddle in her role which involves the planning and co-ordination of clinical nursing services. Special thanks to the staff who have resigned during the year, especially Miss Margot Ballard who retired in early December, 1987.

Finally, a special thanks to all the staff who have participated in the changes at Tweddle Baby Hospital, thereby ensuring the provision of services in ways that reflect community and families' needs and preferences.

I look forward to the coming year when we will continue to work together to provide high quality preventative health services to families with special needs.

Betty Hassold
Betty Hassold
Director of Nursing

SERVICES REPORTS

Tweddle Baby Hospital currently provides three programs:

- * the Children's Unit and Mothers' Cottage;
- * Jacobena Angliss Pre-school (extended hours); and
- * a Pre-school Field Officer service.

CHILDREN'S UNIT AND MOTHERS' COTTAGE

Currently there are 24 paediatric beds and eight beds for mothers. The program aims to assist parents to care for and understand their infant and/or young child.

Families are able to directly approach the organisation to access services. Referrals are also accepted from workers in the health and welfare fields. Decisions regarding admission to the Children's Unit or Mothers' Cottage are made by consultation between the family and the referring person and the nursing staff. The program aims to be flexible in its approach to families and to offer a range of appropriate care and support.

Families who have used the service have a wide range of needs including establishment of breast feeding, behavioural problems in children and the need to further develop or refine parenting skills. Additionally, there is a facility for families of children with special needs e.g. cerebral palsy, to access regular respite care.

Over the last months staff have participated in regular staff meetings and Nursing Advisory Committee meetings. Any changes to established nursing practice or procedures have been discussed at these forums prior to their implementation. It is anticipated that the employment of a Charge Nurse will facilitate new developments in caring for and supporting families with young children.

In the twelve months from the 1st July, 1987 to the 30th June, 1988, 410 clients were admitted to the Children's Unit for a total of 4151 days. This is an increase on the previous year's admissions and inpatient bed days of 35 children and 400 days respectively.



Paula Walsh, Charge Nurse



Children's Unit and Mothers' Cottage staff.



Staff celebration

PRE-SCHOOL FIELD OFFICER

Play is the right of all children; it is through play that children explore, learn and develop an understanding of their world. For the young child it is a vital and meaningful form of expression. Children also have the right to love, to good nutrition, to shelter, and to education. We have a role as early childhood teachers to inform the community of the value of early childhood education and to assist parents to protect the rights of their children.

It is of concern that early childhood education, and child care is responding to political and economic factors rather than the needs of children and their parents. Programs must be flexible and responsive to children's needs. Maybe an extended hours program is needed, or a program for three year olds. Assisting families to gain access to early childhood programs is a continuing challenge.



We were successful in obtaining funding through the Commonwealth Special Education Programs to provide integration aides to assist four children with special needs. The aide assists the child participate in the kindergarten's educational program. In all cases the child would not have been able to attend without the support of an aide. I have been part of a Committee at a regional level in reading, selecting and prioritising submissions, before they are passed on to head office. It is an onerous task given the number of genuine requests for funding.

With the occupational therapist and speech pathologist from the Early Childhood Development Program (ECDP), a playgroup for children with special needs and their parents was offered for 10 weeks.

I have spent each Friday morning at Tweddle working in the playroom with the children and staff. My work has involved direct contact with the children and has also included resourcing the staff. It has been an opportunity for me to get to know staff, and to experience first hand, work in a very different setting.

I have moved my office into the ECDP building and I appreciate the contact and support I receive from the staff. It helps to make a Pre-school Field Officer's position less isolated. I would also like to thank the Tweddle staff for their cooperation and support throughout the year.

Pat Agostino
Pre-School Field Officer

JACOBENA ANGLISS PRE-SCHOOL

I have great pleasure in presenting my fourth report as the Director of the Jacobena Angliss Kindergarten.

At a time when much attention has been focused on the need for parents to have access to high quality child care, the importance of pre-school education has been overlooked. There is a growing need for people involved in early childhood education to communicate to others in the community, the importance of the kindergarten year.

Kindergarten teachers tend to assume that others realise the benefits of a kindergarten experience, but this is not so. Teachers must constantly inform the community about the social, emotional, physical and cognitive needs of children and how the kindergarten provides for those needs over a twelve month period. There is no doubt that the first five years are the most important in a child's development. Government and community support is essential to ensure all young children have access to high standard early childhood education programs.

Extended hours programs have an important role to play in early childhood education. An extended hours kindergarten is a centre based service providing an enriched developmental and educational program for 3-5 year old children over an extended day. It is essential that there be some kindergartens providing a full day program to meet the needs of the diversity of children and families in this area.

To date, 1988 has been an interesting and changing year. The kindergarten, as part of the Tweddle Baby Hospital, has been required to assess how the requirements for maintaining the kindergarten can be best met on a short and long term basis. It is hoped that the high level of support can be maintained as much as possible, to ensure the continued growth of this centre.

It has been extremely pleasing to observe the development of the children, watching their independence and self esteem grow to enable them to meet new challenges. Each year, the needs of the group changes and it is important to carefully observe and evaluate each child's progress and plan for them accordingly within the group. Activities are provided to meet the needs and interests of the children and to develop and extend their capabilities.

The children's enthusiasm for our music groups has grown over the year. We have had an exciting year practicing and developing skills so that many children have a sound understanding of the elements of rhythm, melody, harmony and music expression. Our repertoire of songs has continued to grow. We visited the Melbourne Town Hall for the Baby Proms performed by the Melbourne Symphony Orchestra and were entertained by the Lightning Creek Band, both events being very successful.

The long awaited remodelling of the playground has been completed. The Footscray Council was extremely helpful in moving equipment and planting grass. The changes have made an enormous difference to the playing conditions and provide the children with a larger grassed area, something which few children would have at home. A verandah at the front of the kindergarten was also constructed which provides shelter for parents and extra playing space in wet conditions.

Thank you to all parents and families who have helped at the kindergarten this year. Support from families, in which ever way possible, is always welcomed and appreciated.

Support from other professionals has been important this year. A co-ordinated effort from all parties involved with children with special needs ensures that the children's needs are met in the most effective way.

Support from Maureen Hobson has again been invaluable. Elaine Verkys resigned this year and has been replaced by Sue Ryan. My thanks to her for her help and enthusiasm. Thank you also for the ongoing support of the Tweddle Committee and the Hospital staff.

I have gained a great deal of satisfaction from working with the children this year and will continue to provide an interesting and stimulating program for the remainder of the year.

Working with children has its high and low points, but I have found working in this extended hours kindergarten to be extremely challenging, ever changing and rewarding.



Penelope Steuart

Maureen Hobson

Sue Ryan

Penelope Steuart
Director

REPORT OF THE COUNCIL

The Councillors present their report on the state of affairs of the Hospital at 30th June, 1988 and on the deficit for the year then ended.

We report that there was a deficit for the year of	27,365
which has been added to the debt balance of the Maintenance Account	138,789
	<u>166,154</u>
Deduct provisions written back not now required	96,882
	<u>69,272</u>
Add accumulated annual leave paid M. Ballard	49,798
to leave an accumulated deficit of	<u><u>\$119,070</u></u>

The undermentioned transfers to and from provision were made during the year before arriving at the deficit of \$27,365 reported above:

Depreciation of Fixed Assets	5,598
Long Service Leave	14,932
Holiday Pay	5,909

The principal activity of the Hospital during the course of the year was to act as a public hospital and pre-school centre.

The names of the Members of Council in office at the date of this report are:

Miss E.M. Angliss, Mr. P.R. Angliss, Miss I. Brennan, Mrs. L. Charlton, Mrs. R.R. Downe, Ms. C. Dunne, Mr. K.C. Hambly, Mrs. P.M. Harbeck, Dr. N.W.J. Hocking, Mrs. R. Launder, Mrs. A.V. Lock, Mr. & Mrs. A.J. Mangan, Mrs. E.R. Maskell, Mrs. J. Boyd Mercer, Miss E. O'Connell, Mrs. W.M.K. Stephens, Miss I. Stevenson.

In accordance with the requirements of the Companies (Victoria) Code, the Councillors state that:

- (a) Before the statement of profit and loss and balance sheet of the Hospital were made out all reasonable steps were taken by the Councillors to ascertain what action had been taken in relation to the writing off of bad debts. All known bad debts have been written off and it has not been considered necessary to increase the provision for doubtful debts. At the date of this report the Councillors are not aware of any circumstances which would render the amount written off for bad debts or the provision for doubtful debts to be inadequate to any substantial extent.

- (b) Before the statement of profit and loss and balance sheet of the Hospital were made out all reasonable steps were taken by the Councillors to ascertain whether any current assets (other than sundry debtors) were unlikely to realize, in the ordinary course of business, their value as shown in the accounting records of this Company. At the date of this report the Councillors are unaware of any circumstances which would render the value attributed to the current assets in the accounts misleading.

- (c) At the date of this report there is:

- (i) No charge on the assets of the Hospital which has arisen since 30th June, 1988 and which secures the liabilities of any other person.
(ii) No contingent liability has arisen since 30th June, 1988.

- (d) No contingent or other liability of the Hospital has become enforceable or is likely to become enforceable within the period of twelve months from 30th June, 1988, which, in the opinion of the Councillors, will or may substantially affect the ability of the Hospital to meet its obligations as and when they fall due.

- (e) During the financial year ended 30th June, the results of the operations of the Hospital were not, in the opinion of the Councillors, substantially affected by any item, transaction or event of a material and unusual nature.

- (f) No item, transaction or event of a material or unusual nature has arisen in the interval between 30th June, 1988 and the date of this report which, in the opinion of the Councillors, will affect substantially the results of the operation of the Hospital for the year ended 30th June, 1989.

- (g) At the date of this report the Councillors are not aware of any circumstances not otherwise dealt with in the report or accounts which would render any amount stated in the accounts misleading.

- (h) Since the end of the previous financial year, no Councillor has received or become entitled to receive any benefit (as defined in Section 270(7) of the Companies (Victoria) Code) by reason of a contract made by the Hospital with a director or a firm of which he is a member or with a Company in which he has a substantial financial interest.

On behalf of the Members of the Council,

N.W.J. HOCKING, Councillor

P.R. ANGLISS, Councillor


Dated: 28th September, 1988

TREASURER'S REPORT

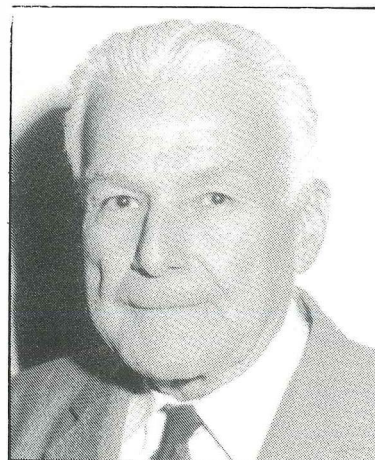
The result for the year was a deficiency of \$27,365 after making Provisions for Long Service leave of \$14,932 and Holiday Pay of \$5,909. Depreciation of \$5,598 was also charged.

In this current year as in past years, it was necessary to call on our Donations and Income from Investments to keep within our budget.

The outlook for next year should be much the same with the use of Donations and Income from Investments to attempt to keep within the budget.



K.C. Hambly,
Honorary Treasurer
Dated: 28th September, 1988



COUNCILLORS' STATEMENT

We, N.W.J. Hocking and P.R. Angliss, being two of the Councillors of The Tweddle Baby Hospital in accordance with a resolution of the Members of the Council, state that in the opinion of the Councillors the accompanying balance sheet is drawn up so as to give a true and fair view of the state of affairs of the Company as at 30th June 1988 and the statement of profit and loss is drawn up so as to give a true and fair view of the results of the Company for the year then ended.

On behalf of the Council, N.W.J. Hocking, Councillor
P.R. Angliss, Councillor

AUDITOR'S REPORT

I report to the members of The Tweddle Baby Hospital that, having audited the Company's accounts for the year ended 30th June 1988, I am of the opinion that the attached Balance Sheet, Statement of Income and Expenditure and Reports have been properly drawn up so as to give a true and fair view of the matters required by the Companies (Victoria) Code to be dealt with in the accounts and in accordance with the provisions of this Code and that the accounting records and other records and the registers required by this Code to be kept by the Company have been, in my opinion, properly kept in accordance with the provisions of this code.



NEIL G. RAVEN, F.C.A.

Dated 30th September, 1988

TWEDDLE BABY HOSPITAL BALANCE SHEET

AS AT 30TH JUNE 1988

1987			\$	\$
1987				
\$				
	CURRENT ASSETS			
250	Cash on Hand			250
12,093	Cash at Bank — Operating Account	1,356		
8,298	— Endowment Account	58,738		60,094
5,363	Stores on Hand, at Cost			5,300
31,741	Sundry Debtors — Government Grants			6,317
1,958	Fees Outstanding	3,577		
(1,211)	Less Provision for Non Recoveries	1,211		2,366
58,492				74,327
496,409	INVESTMENTS			412,409
	FIXED ASSETS			
42,028	Plant and Equipment, at Cost	42,028		
20,449	Less Accumulated Depreciation	21,787		
21,579				20,241
7,646	Motor Vehicle, At Cost	13,503		
4,828	Less Accumulated Depreciation	760		
2,818				12,743
42,500	Freehold Land at Valuation made by Council on 22nd April, 1965	42,500		
22,500	Land under Trusteeship, at Cost	22,500		
65,000				65,000
	BUILDINGS			
2,400	1. Old Hospital at Depreciated Value	2,400		
2,150	Less Accumulated Depreciation	2,150		
250				250
145,063	2. New Hospital on Land under Trusteeship, at Cost	145,063		
35,255	Less Accumulated Depreciation	36,655		
109,808				108,408
212,297	3. New Hospital on Freehold Land, at Cost	212,297		
54,105	Less Accumulated Depreciation	56,205		
158,192				156,092
14,280	4. Pre-School Centre			14,280
926,828	Total Assets			863,750
	CURRENT LIABILITIES			
28,483	Sundry Creditors			21,726
58,762	Provision for Long Service Leave			48,004
92,724	Provision for Annual Leave			53,442
5,000	Provision for Retiring Benefit			—
21,000	Provision for Future Maintenance			—
205,969	Total Liabilities			123,172
720,859	Total Net Assets			740,578
	MEMBERS' FUNDS			
	Balance as at 1st July, 1987			
275,611	— Hospital Funds			275,611
167,563	— Property under Trusteeship			167,563
163,361	— Endowment Fund Reserve			163,361
253,113	— Research and Development Reserve			253,113
859,648				859,648
138,789	Less Accumulated Deficiency			119,070
720,859	Balance as at 30th June, 1988			740,578

INCOME AND EXPENDITURE STATEMENT

FOR YEAR ENDED 30TH JUNE 1988

1987			1987		
\$	EXPENDITURE	\$	\$	INCOME	\$
2,889	Provisions	2,676	669,218	Government Grants	696,767
2,016	Dispensary	1,844	5,750	Lord Mayor's Fund	—
102,487	Contract Catering	99,540	8,209	Other Donations	1,260
89,714	Domestic	79,013	40,464	Donations for Specific Purposes ..	34,054
596,735	Salaries and Wages	631,036	87,439	Patients' Fees	72,001
5,380	Depreciation	5,598	57,015	Interest on Investments	64,061
17,733	Repairs and Maintenance	16,796	5,282	Kindergarten Fees	—
11,827	Superannuation	16,229	26,080	Miscellaneous Receipts	16,023
10,446	Long Service Leave Provision ..	14,932	20,992	Workers Compensations	
9,006	Annual Leave Provision	5,909		Refunds	13,925
40,064	Administration Expenses	50,001	66,035	Kindergarten Salaries paid by	
586	Bad Debts	297		Government	—
75,617	Kindergarten Salaries	—	986,484		898,091
4,796	Kindergarten Expenses	—	(12,720)	Deficiency for year	27,365
3,868	Cost of Replacement of Assets ..	885			
600	Audit Fees	700			
<u>973,764</u>		<u>925,456</u>	<u>973,764</u>		<u>925,456</u>

ACCUMULATED DEFICIENCY ACCOUNT

1987			1987		
151,509	Balance as at 1st July, 1987	138,789	12,720	Surplus for year	—
—	Deficiency for year	27,365	—	Provisions written back	
—	Annual Leave paid —		—	— Provision for Future	
	Matron Ballard	<u>49,798</u>	—	Maintenance	21,000
		77,163	—	— Provision for Retiring	
			—	Benefits	5,000
			—	— Provision for Long Service	
			—	Leave	
			—	— Matron Ballard	25,690
			—	— Provision for Annual Leave	
			—	— Matron Ballard	<u>45,192</u>
					96,882
			<u>138,789</u>	Balance as at 30th June, 1988 ..	<u>119,070</u>
<u>151,509</u>		<u>215,952</u>	<u>151,509</u>		<u>215,952</u>

TWEDDLE BABY HOSPITAL CENTRAL AUXILIARY: FINANCIAL STATEMENT

FOR THE YEAR ENDED 30TH JUNE 1988

RECEIPTS		DISBURSEMENTS	
Functions		Functions	
Hotel Australia Luncheons		Luncheon at home of	
July, 1987.....	27	Miss Ann Beaton	
August by courtesy		Postages	29
Mrs. T. Mounsey.....	200	Drinks	29
			58
Luncheon and talk by		Luncheon at home of	
Mr. W. Fordyce at home of		Mrs. D. Gibson	
Miss Ann Beaton.....	1,159	Hire of chairs.....	64
Luncheon at Benbow,		Hire of microphone.....	35
home of Mrs. D. Gibson and		Postages	25
talk by Mr. T. Charlton.....	1,598		124
Film mornings and luncheons		Film mornings and luncheons	
Trak Cinema		Trak Cinema	
August, 1987.....	335	August, 1987.....	203
May, 1988.....	404	May, 1988.....	248
June, 1988.....	520	June, 1988.....	330
	1,259		781
	4,243		963
Donations other than for functions.	1,021	The Tweddle Baby Hospital	5,250
Bank interest.....	44		6,213
	5,308		713
Balance at bank 30th June, 1987..	1,618	Balance at bank 30th June, 1988	\$6,926
	\$6,926		

JACOBENA ANGLISS PRE-SCHOOL: SCHEDULE OF RECEIPTS AND PAYMENTS

FOR THE YEAR ENDED 30TH JUNE 1988

Receipts for Year		Payments for Year	
	\$		\$
— Fees	5,961	— Wages	11,554
— Wages	7,775	— Repairs and Maintenance.....	287
— Government Grants.....	2,600	— Catering	1,908
— Donations.....	2,530	— Petty Cash Expenditure.....	368
— Sundry Refunds.....	31	— Playground and Equipment....	737
	18,897	— Petty Cash Advance.....	50
	18,897	— Bank Charges and Postage.....	64
		— Books, Linen, Art Suplies.....	469
		— Work Experience.....	30
		— Sundry Expenses.....	237
			15,704
		Balance as at 30th June, 1988.....	\$3,193

DONATIONS

The Council wishes to express their sincere thanks to all who have so generously donated funds to Tweddle Baby Hospital.

TWEDDLE BABY HOSPITAL

Est. Late Edward Wilson	500.00
Pethard Tarax Ch. Trust	1,000.00
Est. Arthur A. Thomas	6,000.00
E. & M. Maskell	50.00
Commonwealth Bank	50.00
Containers Limited	75.00
Est. Late Geo. Adams	1,000.00
Est. D.J. Galt	927.29
Est. J.H. Hyslop	20.00
Shire of Gippsland	25.00
West Suburban Publications	389.40
W. Stephens	100.00
M.R. McDowell	10.00
Tweddle Central Auxiliary	5,250.00
Soroptimist Club of Cut Paw Paw	200.00
Tweddle Infant Welfare Assn	100.00
Western Ind. Newspapers	261.00
P.E. Woods	50.00
The Pups	75.00
Footscray St. Johns Masonic Lodge	5.00
Athine Chrystal	5.00
Pacific Dunlop	250.00
David Syme Ch. Trust	100.00
I. & M. Caruana	100.00
A.L. Allen Foundry Co.	100.00
Wm. Angliss Charitable Trust	5,000.00
Collier Charitable Trust	4,000.00
Est. G. Green	1,654.00
Paragon Holdings Pty Ltd	300.00
Est. Late J. Tweddle	1,614.00
Price Point Supermarket	10.00
Westpac Banking Corporation.	200.00
Sunshine Community Chest	200.00
Elisabeth Murdoch Trust	500.00
Uniting Church Footscray	
Opportunity Shop	100.00
Ormond Road Uniting Church	
Ladies Guild	15.00
Joe White Bequest	1,000.00
Tip Top Bakeries	25.00
Beth Drayton	500.00
K. Burge	50.00
Royal Victorian Bowls Association	500.00
T. Chau	4.00
	<u>\$32,314.00</u>

JACOBENA ANGLISS PRE-SCHOOL

Lord Mayor's Fund	2,800.00
Hospital & Charities Sunday	200.00
	<u>\$ 3,000.00</u>

CENTRAL AUXILIARY

Jean Littlewood Combined Charities Club	300.00
I. Williams	10.00
F. Hayes	10.00
L. Bartlett	10.00
D. Tonkin	12.00
A. Downe	222.00
Mr. M. Angliss	16.00
Dr. V. Eddy	12.00
C. Cowan	200.00
M. Economus	12.00
Anonymous	200.00
M. Angliss	172.00
D. Hurley	12.00
A. Hall	149.00
L. Hopkins	12.00
V. Bowen	10.00
T. Mounsey	130.00
N. McDougall	100.00
H. Lynch	12.00
Mr. Irving	12.00
J. Jackson	12.00
Anonymous	8.00
Anonymous	5.00
Mrs. McNeill	5.00
Anonymous	2.00
M. Sennitt	12.00
Mrs. Vaughan	2.00
Mrs. Russell-Smith	2.00
L. Charlton	80.00
Mrs. McConchie	2.00
D. Tonkin	12.00
W. Calloway	60.00
Mr. L. Mackay	4.00
V. Weekes	56.00
P. Sherwen	12.00
W. Clark	50.00
D. Tuppen	12.00
M. Mangan	45.00
Mrs. Cuish	2.00
Mrs. Fielding	2.00
D. Phillips	48.00
W. Stephens	20.00
M. Ballard	44.00
C. Smith	20.00
Dot Tuppen	40.00
J. Price	20.00
G. Redman	40.00
R. Lindsay	20.00
E. Lambert	40.00
I. Ballard	39.00
J. Cable	35.00
M. Maskell	30.00
A. Locke	27.00
J. Grey	24.00
P. Harbeck	22.00
J. Mercer	22.00
H. Burns	20.00
	<u>\$ 2,497.00</u>

STAFF

DIRECTOR OF NURSING:
Ms Betty Hassold

CHARGE NURSE
Ms Paula Walsh

ASSOCIATE CHARGE NURSES:
Miss Mary Beckett, Miss Kathleen Bourke, Mrs Marie Bradley, Mrs Nancy Clark, Mrs Helen Rossiter, Mrs Veena Rowe

STAFF NURSES:
Mrs Thai Ainge, Miss Jenny Batten, Mrs Janice Brunt, Miss Karen Clark, Mrs Amanda Gamble, Mrs Carol Garnet, Mrs Lesley Henwood, Miss Laura McHale, Mrs Marie McHugh, Mrs Barbara Simpson, Mrs Sue Vida, Mrs Leonie Welshe, Mrs Vicki Williams

PRE-SCHOOL FIELD OFFICER:
Miss Pat Agostino

JACOBENA ANGLISS PRE-SCHOOL
DIRECTOR:
Miss Penelope Steuart

ASSISTANTS:
Miss Maureen Hobson,
Mrs Sue Ryan

DOMESTIC:
Mrs Flo Brooking,
Mrs Irene Tsflidsis
Mrs Veronica Timothy

MAINTENANCE:
Mr Ian Bradley
Mr Robert Reid

STATISTICS

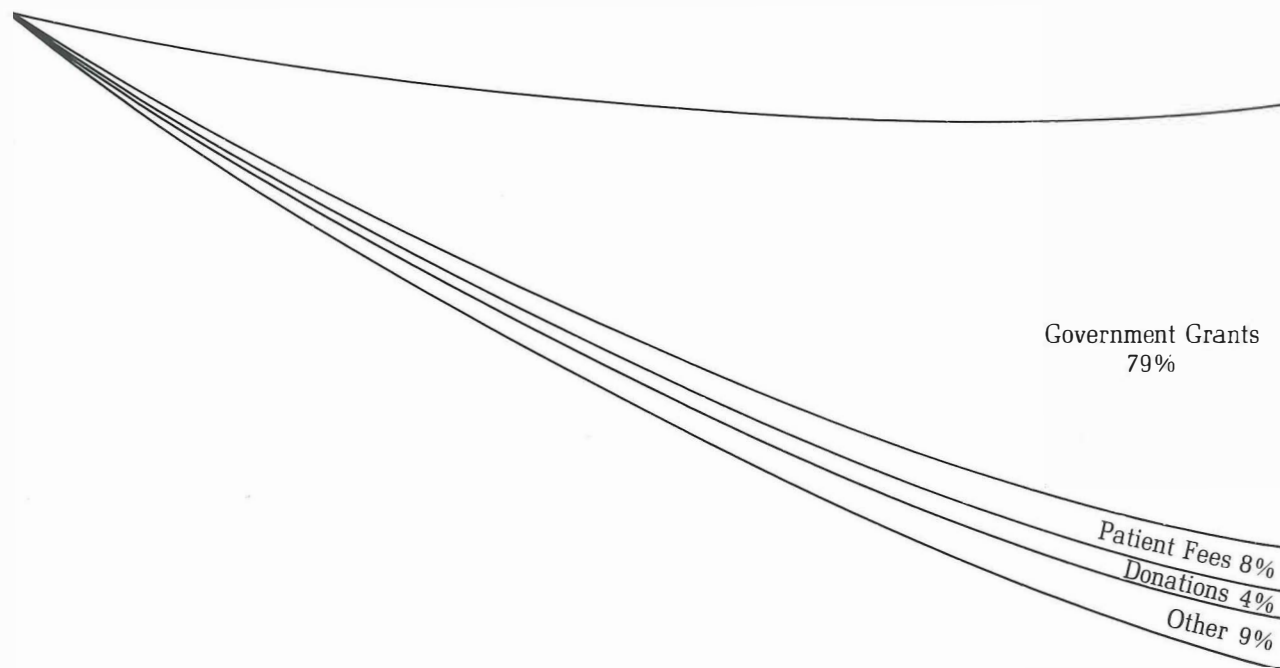
Number of Beds: 24 Paediatric
8 Adults

Number of Patients Treated: 410

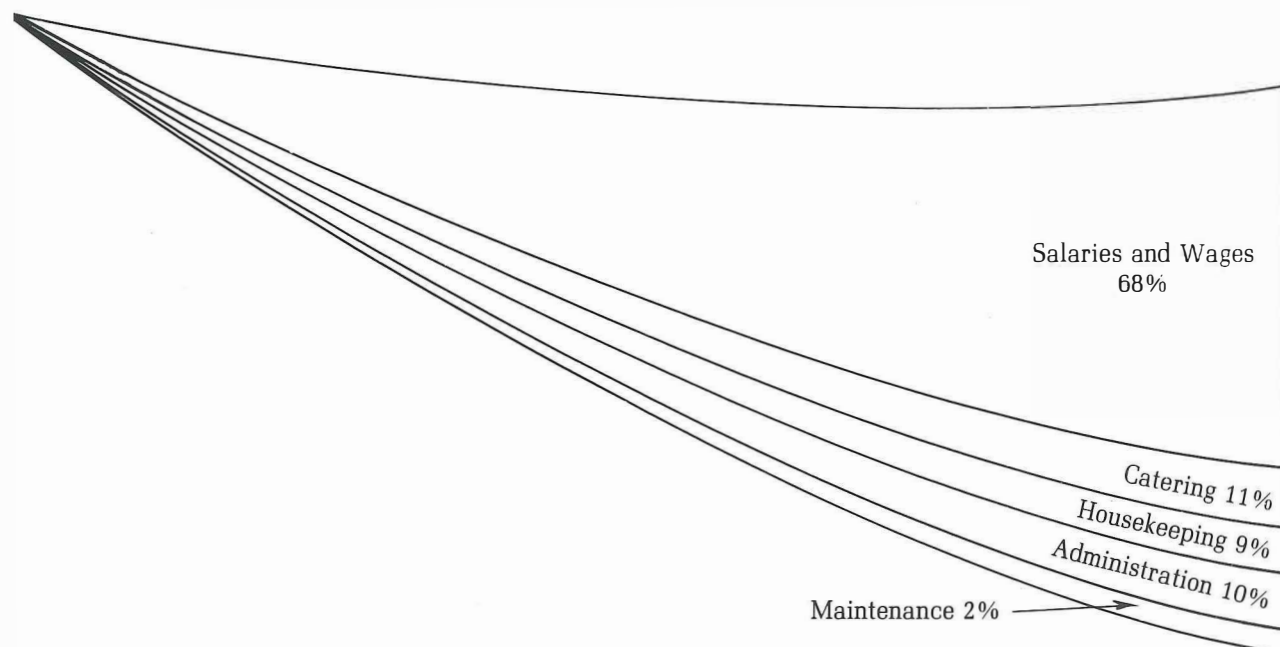
Inpatient Bed Days: 4151

FUNDING

WHERE THE MONEY COMES FROM



HOW THE MONEY IS SPENT



TWEDDLE BABY HOSPITAL CENTRAL AUXILIARY:

59TH ANNUAL REPORT 1987-1988

It is with much pleasure we submit, on behalf of the members, the 59th Annual Report of the Tweddle Baby Hospital Central Auxiliary covering the year ended 30th June, 1988.

58TH ANNUAL MEETING

The 58th Annual Meeting was held on Wednesday, 19th August, 1987 at the Hotel Australia "Maple Room" as guests of Mrs. Thelma Mounsey. Nineteen members were present together with Miss Margot Ballard, Director of Nursing at Tweddle Baby Hospital and Mrs Betty Burton, President of the Hospital. Our Patroness, Mrs. Diana Gibson, apologised for her inability to attend.

The Annual Report was presented by the President, Mrs. Joan Mercer, and the financial statement by the Honorary Treasurer, Mrs. Eunice Lambert. Both were adopted with acclaim.

The minutes of the 57th Annual Meeting were taken as read and accepted as a true record.

The following Office Bearers were elected:

President:	Mrs. Joan Mercer
Vice Presidents:	Mrs. Berta Downe, Mrs. Jean Brunning, Mrs. Alice Hall and Mrs. Jean Price
Honorary Secretary:	Mrs. Margaret Mangan
Assistant Honorary Secretary:	Mrs. Win Clark
Honorary Treasurer:	Mrs. Eunice Lambert
Assistant Honorary Treasurer:	Mrs. Loris Charlton
Welfare Secretary:	Mrs. Jean Price

Miss May Angliss proposed a vote of thanks to the President, Mrs. Joan Mercer, Honorary Secretary, Mrs. Margaret Mangan and the Honorary Treasurer, Mrs. Eunice Lambert, remarking that there was no one more efficient from the present holders of office. Carried unanimously.

It was moved by Mrs. Eunice Lambert, seconded by Mrs. Gwen Redman, that the present members of the Hospital Council be re-appointed, namely Miss May Angliss, Mesdames Joan Mercer, Berta Downe, Phil Harbeck, Avis Lock, Margery Maskell, Vera Weekes, Loris Charlton and Margaret Mangan.

The President gave a warm welcome to our special guests and thanked all members of the Committee for their help with a special "Thank You" to the Honorary Secretary and Honorary Treasurer. There was much applause for the excellent results of various functions. Our many thanks to Mr. Ken Hambly for acting as our Honorary Auditor.

Miss Margot Ballard gave a most interesting and informative talk on the Hospital. She was very pleased to be present at our meeting to express her thanks, as without the generous donations of the Auxiliary and others the work of the Hospital would be curtailed.

The new equipment was making life much easier, particularly in the kitchen which is now one of the most up-to-date and well equipped.

An interesting leaflet on the work undertaken at the Hospital had been printed and distributed. It had been an interesting and challenging year with many problems — parents under stress, drug addiction, alcoholic problems and children with behavioural problems.

Miss Ballard said that the whole scene is changing. Tweddle will have to look to more people coming in with specialist roles. There were still a number of patients coming in for mothering skills.

Dr. Glynn White sent his regards and good wishes to Auxiliary members. His advice is still of great value.

Mrs. Mercer thanked Miss Ballard for her most interesting talk and members were most enthusiastic in their acclaim.

After a vote of most sincere thanks to our hostess, Mrs. Thelma Mounsey, for her generosity in presenting us with such a delicious luncheon, the meeting closed.

MEETINGS

Miss May Angliss, Mesdames Eunice Lambert, Thelma Mounsey, Margaret Mangan, Jean Price, Joan Mercer and Alice Hall acted as hostesses for our monthly meetings this year. The average attendance was 13.

FINANCE

The Auxiliary contributed \$5,200.00 to the Hospital this year and \$50.00 for Christmas Cheer. This excellent result was made possible by the continued efforts of members and the generosity of members and friends. We are again indebted to the Jean Littlewood Charitable Fund for its very generous donation. Several members attended her Fund's functions through the efforts of Mrs. Phil Harbeck.

We make particular mention of Mrs. C. Cowan, Mrs. Berta Downe, Anonymous, Miss May Angliss, Mrs. Alice Hall, Mrs. Thelma Mounsey and Mrs. Nan Macdougall who were our major donors.

We would like to express our gratitude to everyone who has given so freely of their time, talents and financial support to us throughout the year. We particularly thank Miss Ann Beaton and Mrs. Diana Gibson for making their homes available to us for our functions.

FUNCTIONS

Three successful Theatre Luncheons were held in August, May and June at Trak Cinema to see "The Gods Must Be Crazy" (37), "Travelling North" (45) and "Crocodile Dundee II" (90). The nett result of these functions was \$458.00.

In October Miss Ann Beaton, through Mrs. Mary Economou, kindly allowed us to use her home for a most successful "Chicken and Champagne" luncheon and talk by Mr. H.S.W. Fordyce. Mr. Fordyce gave a most entertaining talk and we are very grateful to him and to Miss Beaton for helping us to raise \$1,131.30 for the Hospital. Approximately 90 attended.

Our next function was a Basket Luncheon at "Benbow", Frankston and a most interesting talk on "Gallopoli" by Mr. Tony Charlton. We are most appreciative of Mrs. Diana Gibson's generosity in providing the venue and to Mr. Charlton for his help and the work he put into presenting his talk and showing slides. We raised \$1,598.00 from this function. Approximately 70 attended and our thanks is recorded to Mr. Colin McPherson for all his assistance to us on that day. We were very fortunate to receive many generous donations for these functions.

We thank our Auxiliary members for all their hard work and generosity for our functions throughout the year and all our kind and loyal friends who support us in our endeavours.

MEMBERSHIP

Many of our members have not been well during the year. We hope they are all improved and restored to good health.

We record with great sorrow the death of Dr. J. Glyn White. Dr. Glyn had been associated with Tweddle

for a great number of years and had been a tower of strength and a friend to all. Our sympathy was expressed to Mrs. Amy White and several members attended the funeral service in Camberwell.

Miss Margot Ballard retired as Director of Nursing at Tweddle Baby Hospital in December and Mrs. Betty Burton retired as President. Margot and Betty were invited to our November meeting together with our Patroness, Mrs. Diana Gibson. Gifts were presented and thanks expressed to Margot who has been with Tweddle for 20 years and had become a friend to us. She will be greatly missed. We were very pleased when she was awarded an O.A.M. in the Queen's Birthday Honours. An honour richly deserved.

We were pleased to welcome Miss Betty Hassold, the new Director of Nursing, to our luncheon at "Benbow" in March. She gave a most enthusiastic address and outlined future plans.

Mrs. Alice Hall launched her book "A Girl Called Alice" in November. We are grateful to Alice for giving so generously the proceeds from this wonderful accomplishment.

APPRECIATION

We record our special thanks to our Honorary Treasurer, Mrs. Eunice Lambert, for her efficiency in looking after our finances, to Mrs. Win Clark who has helped as Assistant Honorary Secretary, to Mrs. Jean Price who keeps in touch with those who are not well and remembers special occasions and to Mr. Ken Hambly for acting as our Honorary Auditor.

We are quite confident we will continue to have the help and support of members and friends and look forward to the next year, our 60th, and trust that it will be a successful, interesting and happy year.

21st September, 1988



Joan Mercer

Joan Mercer
President



M. J. Mangan

Margaret Mangan
Honorary Secretary

BECAUSE WE CARE . . .

A BEQUEST WILL HELP TWEDDLE BABY HOSPITAL

FORM OF BEQUEST

I give and bequeath unto Tweddle Baby Hospital the sum of \$....., free of all duties. I direct that the receipt of the Treasurer or other proper officer of the Hospital shall be sufficient discharge to my Executor for the Bequest, which is to be applied to general purposes for the said organisation.

Signed

Dated

Witness Witness

