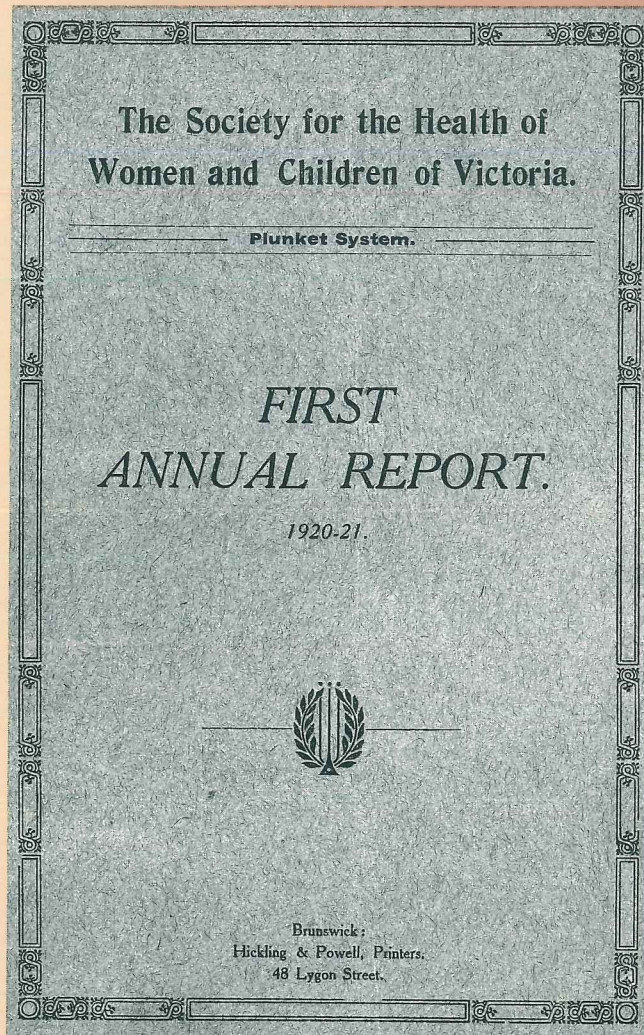


Tweddle Child and Family Health Service



Seventy Fifth Annual Report 1994-95

ACHIEVEMENT SEVENTY FIVE
YEARS OF
75



Tweddle Child and Family Health Service

Mission

Tweddle Child and Family Health Service provides a specialist health development and family support program aimed at strengthening independent family functioning, promoting health and preventing illness and injury. It is concerned with the optimal health, growth and development of all clients.

Incorporation

- Tweddle is a Schedule 1 Public Hospital incorporated under the Health Services Act 1988.

Establishment

- Established in 1924 by The Society for the Health of Women and Children of Victoria.

Accountability

- Accountable to the Minister for Health, the Honourable Marie Tehan M.P. through the Department of Health and Community Services.

Services

- Tweddle provides two residential services with a total of 24 beds:
 1. Child & Family Unit - 14 beds;
 2. Parent & Infant Unit - 10 beds.

Located at:

398 Barkly Street, FOOTSCRAY 3011.

- Three day stay programs offer services from:
 1. Tweddle Day Stay Program, Wyndham
Powell Drive M&CH Centre
35 Powell Drive, Hoppers Crossing 3029
 2. Tweddle Day Stay Program, Maribyrnong
398 Barkly Street, Footscray 3011
 3. Tweddle Day Stay Program, Brimbank
St Albans West M&CH Centre
Stevens Road, St Albans 3021

Guiding Principles

Health is a state of well being not just the absence of illness.

An holistic approach recognises the physical, social and emotional factors effecting well being.

Primary care has a major role in ensuring an individual's health and well being.

Focuses on skill development and prevention rather than ad hoc responses to health problems.

The importance of co-ordinated health promotion and education in the wider community.

Focuses on the family as well as the individual, and the structural forces which impinge on a families' functioning and health.

Empowerment of families to manage their own health and welfare requirements.

Co-ordination of service delivery to achieve flexibility in meeting an individual's and a family's health needs.

Objectives

To provide a specialised health promotion, education and family support day and residential service directed towards assisting parents in caring for infants and young children.

To efficiently utilise appropriate physical and human resources to promote health and well being and to prevent disease, injury and suffering.

To facilitate and encourage involvement in services by liaison and networking, and to assist users of services to make informed decisions about health care.

To foster continuing improvement in health care standards through education, training and dissemination of information.

To develop and implement services at Tweddle, and within the community which will enhance and improve the quality of the services already provided to children, families, and community with a view to promoting health and social equity.

Goals

Leadership - that promotes good health

Develop a leadership role in maternal, child and family health that promotes an effective service infrastructure in Victoria and positions Tweddle as a strong and proactive organisation.

Planning and Development - into the 21st century

Development of responsive strategic and operational directions for the service to enable Tweddle to be relevant and accessible to service users and the broader community.

Service Provision - benefiting the future

Provide a quality residential and community care service for parents and young children to enhance family health and well being.

Quality - continuous improvement

Facilitate and promote a quality, client first, focus within all activities to ensure effective outcomes for service users.

Resources - using them wisely

Manage and enhance human, financial and physical resources to facilitate a culture to achieve service objectives.

The First Ten Years

In September 1920 The Society for the Health of Women and Children of Victoria was formed. The work of the Society was seen to be "chiefly educational". The aim was to raise healthy babies by educating mothers and nurses in the "essential work of mothercraft". The Society adopted the New Zealand model of infant welfare, which was based on the principles and practices of Dr Truby King. The Plunket System extolled the virtues of natural child care and rearing practices. Breast feeding was seen to be the ideal nourishment for infants and fresh air, sunshine and hygiene were considered essential to the development of healthy children and adults.

The Society embraced the concept of a "natural" model of child rearing, with clear principles and a discrete body of knowledge underpinning care practices. It strove to develop a health oriented service rather than an illness focused one. Thus, in 1923 when the Government of the day raised the possibility of an amalgamation with the Baby Health Centres' Association, the Society agreed and signed a document that included a clause "... on the Executive there should be neither Medical Men nor Women".

During the first three years of operation the Society was centre based, with nurses operating in the Municipalities of Coburg, Preston, Williamstown and Footscray. Centres were later opened in Yarraville, West Footscray, Swan Hill and Braybrook.

In 1923 the Baby Hospital and Training School facilities for mothers and nurses were completed, due to the generosity of the Municipality of Footscray who donated the land and Mr and Mrs Joseph Tweddle who funded the building program. The Society's Patron, Her Excellency the Countess of Stradbroke, officially opened the Hospital on March 10th 1924. The first clients were admitted on the 15th March 1924.

The Baby Hospital generated enormous interest and visitors were welcomed from inter State and overseas as well as local people. In 1924-25 a record number of 720 people visited the Hospital and Training School.

In 1926 "in home" services were commenced to assist women who did not have access to a centre based service. It was noted that the visiting nurse referred mothers with more severe problems to Tweddle for a day admission.

General education for mothers was also undertaken, as was education for girls attending schools within Municipalities in which Plunket Nurses operated. An exhibit was mounted annually at the Royal Melbourne Show, where the nursing staff and Committee members answered questions and gave demonstrations of the many methods of infant care advocated by the Society.

The Matron made regular broadcasts from 3LO and wrote a column in the Farmers Monthly on baby care. Thus mothers in rural isolation were provided with the most modern techniques for child rearing.

Educational resources eg pamphlets "Milk and the Baby", were developed and distributed on request. Information was forwarded to interested people both inter State eg South Australia and Western Australia and internationally eg New Guinea, India.

The training of nurses was a major object for the Society and in 1923-24 eight nurses entered the first Training School. By 1930 the Society had trained 64 Plunket Nurses (Maternal and Child Health Nurses) and 25 Primrose Baby Nurses (Mothercraft Nurses).

In the first ten years the Society developed a program that was innovative and based on the needs of families. As the President, Dr Springthorpe said in his address to the Ninth Annual Meeting "Our Society's obligations extend far beyond Baby Health Development, for they include all that pertains to the Health of Women and Children....The basis of all health is education... Prevention is always better than cure." Dr Springthorpe's beliefs are as relevant today as when first stated and have stood the test of time.

Message from the President

At the 1993/94 Annual meeting the Board of Management was proud to announce finalisation of the design for the rebuilding of Tweddle on the Sydney Street site.

For 1994/95 the big news is the letting of a Building Contract and commencement of the building works. Our Annual Meeting this year will be held in the Seminar/Education room created out of the original timber buildings and the balance of the project is expected to be completed by late November 1995.

None of this would have been possible without a \$1.3 million grant from the Department of Health and Community Services.

At a ceremony held at Tweddle on the 20th January 1995, Mrs Marie Tehan, Minister for Health, announced the Grant saying that "Tweddle has been a leader in developing family oriented programs and its Day Stay Program will soon be used as a model for similar programs throughout Victoria. This redevelopment will ensure that Tweddle continues to provide a co-ordinated, integrated service for families and women who are experiencing parenting difficulties."

The new Building will enable us to work more efficiently by combining the two units. In addition, we will be able to develop a stronger focus on Community Education through the newly created Education Centre.

The Tweddle Business Plan for 1994/95 recognised the need to develop a continuum of services for client families. Tweddle commenced as a Residential Program and has extended the options available with the introduction of Day Stay and Education Programs. The Board is looking to extend the service continuum and further innovative service delivery concepts will be developed and trialed as resources permit.

Sales of the 'Lactation' video have been steady. We are encouraged by the response and will actively pursue further topics that are relevant to our client families.

With Victoria University of Technology, we are formulating a combined research program focussing on the problems for families with young children and the role of the family nurse practitioner in the resolution of these problems.

Demand for the services of Tweddle has exceeded all previous records and the Staff has risen to the challenge. The Board of Management is grateful for the support that the Staff has given to the organisation and its objectives. Through the unselfish and untiring efforts of the staff, a great number of families in Victoria are living more rewarding lives. The benefits will be felt in the community for years to come, a testimony to the Staff of Tweddle Child and Family Health Service.

GRAHAM JASPER
President



Board of Management
Patron Mrs Diana Gibson

President

Mr G.H. Jasper, B.Arch.,(Melb)
(Architect Manager)

Vice President

Mrs J. Launder, Dip.Soc.Stud.,(Melb)
(Business)

Treasurer

Mr I. Roberts, B.Comm., MBA., F.C.P.A.
(Finance, Education Administration)

Members

Mr P. Angliss
(Business)

Mr I. Broadway,
B.Comm., Grad.Dip.Acc., F.C.P.A.
(Finance, Management)

Ms P. Digby,
B.Soc.Stud.,(Management)

Ms L. Glanville,
B.A., B.Soc.Work.(Social Planning, Education)

Ms L. Hazelton,
RN.,RM., M&CHN., F.R.C.N.A (Nurse Educator)

Dr N.W.J. Hocking,
M.B., B.S.,(Hons), F.R.A.C.P. (Medicine)

Mr R. Jones,
LLB(Melb) (Barrister and Solicitor)

Ms D. McGregor,
RN.,RM., Dip.C.H.N. (M&CH), B.A.,
(Nurse Manager)

Mrs L. Soong,
RN.,RM., M&CHN (Nurse Manager)

Executive Staff

Chief Executive Officer

Ms B.L. Hassold,
RN.,RM.,Dip.C.H.N.(M&CH) Dip.Ed.,B.A.,
F.R.C.N.A.

Director of Nursing

Ms K.L. Houghton,
Dip.App.Sc.Nsg.,RM., B.App.Sc.N.C.H.,M&CH.

Director of Finance

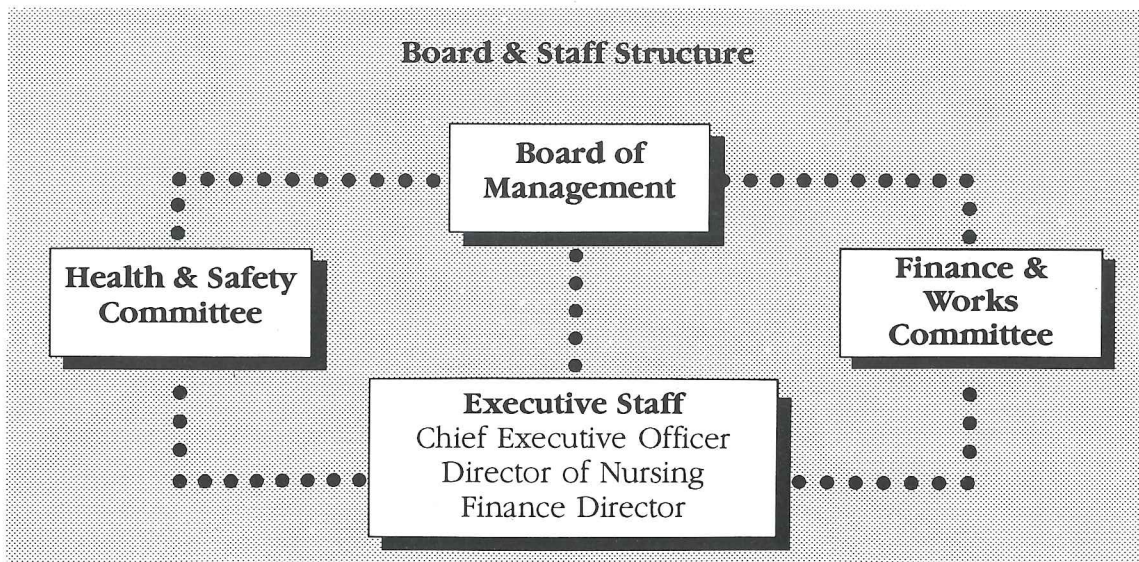
Ms E. Gray, A.S.A.

Honorary Solicitor

Mr V. Adami, Perillo, Adami & Frank

Auditors

Ernst & Young, Chartered Accountants,
Agents for Auditor - General Victoria



Tweddle Child & Family Health Service
75th Annual Report

Introduction

It certainly seems that the only constant facing us today is that change is here to stay. In the past year Tweddle, true to this maxim, has had its fair share of change and development.

In December 1994, the Department of Health and Community Services, Primary Care, released a paper titled 'Early Parenting Services, A Framework for Redevelopment'. This is a document for change. Eight broad objectives were identified with accompanying strategies for their achievement. Whilst many of the objectives and strategies have been previously addressed at Tweddle, we have committed our resources and expertise to assist in the development of State wide standards for Early Parenting Centres.

Funding for Tweddle continues to be provided on an historical basis which, we believe, places us at some comparative disadvantage. The establishment of a Client Profile Data Base, as part of the Redevelopment process, is welcomed as a foundation for an output based funding system. Such a system will assist in the resolution of current funding anomalies.

Recurrent budget cuts totalling \$18,300 were managed and a cash surplus of \$9,521 was achieved. The Department of Health and Community Services supported us in the achievement of our financial targets for the year and their contribution is acknowledged with thanks.

The \$1.3 million capital redevelopment of the Sydney Street site has been progressed. The Minister of Health, Mrs Marie Tehan, attended Tweddle for a special ceremony to announce the project in late January.

Board of Management

The Governor-in-Council reappointed Mr Peter Angliss, Mr Ian Broadway, Mr Graham Jasper and Mrs J Launder for a further three years. A new appointee, Mrs Lesley Soong was also appointed to the Board.

At a Board planning meeting Tweddle's goals

and strategies for achievement in 1995 were reviewed. They include:

- completion of the capital redevelopment;
- trial Day Stay Programs for different target groups;
- investigate the feasibility of in home care;
- investigate the feasibility of a telephone advisory service.

The participation of Board members strengthens Tweddle's ability to service the community and they are sincerely thanked for the support they give this organisation.

Services

Budget reductions required a service review with the implementation of cost saving changes to service operations.

The Child and Family Unit has largely operated according to schedule. The Parent and Infant Unit was reduced from a four night to a three night program. The reduction in the hours of operation assisted in meeting the budget requirements while freeing up some resources with which to pilot a weekly Lactation Day Stay Program.

With the commencement of the Capital Works the Footscray Day Stay Program was relocated from the Sydney Street to the Barkly Street site. In order to accommodate the Day Stay Program in the Residential Units, their hours of operation were changed. During these changes the opportunity was taken to trial other Day Stay Program types such as an evening, a toddler and a Saturday program. Both the Keilor and Werribee Day Stay Programs have been relocated, in part due to budget reduction measures. All programs have been well utilised.

All services have been extremely busy during the last year. Throughput numbers have exceeded those of 1993/94 by 132 clients. Occupancy at 86%, is down on the 92% of the preceding year. The lower occupancy is due to the reduction of the Parent and Infant Unit program by one night per week.

Service	1994/95	1993/94	% Variation
Operational Beds	24	24	Nil
Number of Clients			
● residential	2410	2298	+ 4.6%
● day stay	1032	952	+ 6.0%
TOTAL	3442	3250	+ 5.6%
Bed Days	7537	8093	- 6.9%
Average Length of Stay (days)	3.1	3.5	- 0.4
Occupancy	86.0%	92.4%	- 6.4%

Waiting lists have continued to grow. Clients who meet specified, objective criteria are given priority access to Tweddle's services. Unfortunately this does not assist those who do not meet the priority criteria and they are waiting up to six months to access services. The problem has been brought to the attention of the Department and the issue will be dealt with during the Early Parenting Centre Redevelopment.

Medical services continue to be provided on a contracted basis, which is proving to be very successful.

At the 30th December 1994 the Parent Adviser to the Hearing Impaired Service was transferred to the Department of Health and Community Services.

Accreditation

During the past year the Board approved a Continuous Quality Improvement Plan with the aim of achieving accreditation within the next two years. The allocation of scarce resources to this function confirms the importance and value Board and staff place on ensuring the provision of high quality services to families.

Education

The Education Program has had a successful year with four parent and ten professional seminars conducted.

The production of a video on normal breast feeding reflects Tweddle's commitment to an holistic approach for services. The video has been well received by community based professionals and by the Nursing Mothers' Association.

Tweddle continues to support the education of health professionals and has accepted and resourced students from:

- Victoria University of Technology;
- Western Metropolitan College TAFE;
- Homes Glen College of TAFE;
- Deakin University;
- Royal Melbourne Institute of Technology;
- Swinburne University of Technology;
- Northern Metropolitan College of TAFE;
- School of Mines and Industries, Ballarat;
- La Trobe University; and
- Kangan Institute of TAFE.

Additionally, numerous Secondary College students from the western suburbs of Melbourne have been accepted for work experience.

Tweddle Child & Family Health Service

Occupational Health and Safety

New representatives were elected to the Occupational Health and Safety Committee in November 1994. Meetings continued on a monthly basis but progress tends to be slow due to the large quantity of work to be undertaken and the small numbers of staff available to do it.

Projects for the year included:

- development of an Occupational Health and Safety Staff Education Program focussing on security, fire safety and stress management;
- review of existing Occupational Health and Safety policies.

The education program has been implemented and several fire drills have been carried out, as were regular safety inspections. The review of Occupational Health and Safety policies is continuing.

Administration

Reception services and administration have been reviewed with a view to achieving productivity gains while streamlining client access to services. It is true to say that administration staff have become multi-skilled and undertake a wide variety of tasks including admitting clients, pays, switchboard and meeting and greeting people.

Medical records have been computerised with direct on-line transmission of admission episodes to Health Computing Services.

Food Services continue to be purchased from Western Hospital and much effort goes into improving this area of service. All domestic staff continue to work together across work boundaries to get the job done.

Finance

The year under review saw Tweddle's budget cut by \$18,300 giving us an operating budget of \$1,306,300. Productivity increases and service changes enabled operating costs to be

kept within budget as specified in agreement with Health and Community Services.

Client fees for the year totalled \$407,228, a reduction of \$113,076 or 21.7%. This is a reflection of the number of families who no longer have private health insurance.

Comparative Residential Costs

	1994/95	1993/94
	\$	\$
Total Inpatient Costs	1,329,980	1,358,681
Average Cost per Client*	386	418
Cost per Client Day#	155	150
Patient Fees	407,228	520,304
Government Grants*	937,200	849,600
Other Revenue	12,299	26,126
Consultants	2,700	9,175

* These figures have been adjusted to exclude the Parent Adviser to the Hearing Impaired and the Footscray/Sunshine C&FHS. These cost were not related to Tweddle's services.

Includes all residential and day stay clients.

Donations 1994/95

	\$
Anonymous	263.65
Ms Beth Drayton	250.00
Dame Elizabeth Murdoch	1,000.00
Tweddle Central Auxiliary	1,000.00
Lord Mayor's Fund	4,600.00
Hospital Charities	400.00
Royal Victorian Bowling Association	500.00
Estate of the	
Late Joseph T. Tweddle	826.12
W.M.C. Stephens	100.00
E.M. O'Connell	100.00
St John's Lodge	10.00
D T Galt Estate	1,055.76
William Angliss	
(Vic) Charitable Trust	10,000.00
The Pups	100.00
R & R Huntingdon	100.00
Deluca Investments	20.05
P. Banks	5.00
M. Herring	50.00
Joe White Bequest	1,000.00
George Francis Green Estate	690.00
Pethard Tarax Charitable Trust	500.00
TOTAL	22,570.58

Thankyou for your donation

Staff

Regular inservice and professional development has continued to be of major significance in the provision of services at Tweddle. The up to date information and the renewal of enthusiasm, knowledge and skills the staff get from such resourcing maintains the professionalism and spirits of all.

No work time was lost due to industrial disruption in 1994/95.

There were no WorkCover hours lost in 1994/95.

Equal Employment Opportunity is the responsibilities of the Occupational Health and Safety Committee. The Committee met regularly to consider EEO matters.

EEO Report 1994/95

	EFT**	Women*	Men*	TOTAL	Koorie
Nursing	20.85	34	-	34	-
Administration	3.35	6	-	6	-
Domestic	3.35	1	1	2	-
Food Services	89	2	-	2	-
TOTAL	28.44	43	1	44	-

* Represents actual people employed

** Effective full time positions

Recurrent expenditure on salaries and wages during 1994/95 was \$997,100. Constant review of work practices has enabled the staff to deliver services, within budget, to a greater number of clients than ever before.

The staff are to be congratulated for their professionalism, application and sheer hard work. The Board acknowledges the achievements of the staff in meeting Tweddle's service and financial targets.

Staff List

Chief Executive Officer

Ms B. Hassold

Director of Nursing

Ms K. Houghton

Finance Director

Ms E. Gray

Nursing Charge Nurses

Ms G. Berman*

Ms G. Ralston

Ms H. Speirs

Ms L. Williams#

Associate Charge Nurses

Mrs M. Bradley

Mrs S. Burns

Ms K. Connolly

Mrs A. Goodger

Mrs C. Hegarty^

Mrs S. Rodwell

Mrs V. Rowe

Ms H. Upton

Inquiry Booking Nurse

Mrs M. McHugh

Day Stay Programs

Mrs T. Brown^

Mrs R. Goodman

Mothercraft Nurses

Mrs T. Ainge

Miss J. Batten

Ms G. Bock

Miss K. Clark

Ms H. Duggan

Mrs A. Gamble+

Mrs C. Grech

Mrs L. Henwood

Mrs L. Kelly^

Mrs M. Lynch

Ms D. Talbot+

Mrs S. Turner

Mrs L. Welshe

Medical Records

Mrs M. Chao

Administration

Mrs S. Eaton

Mrs K. Haigh

Mrs J. McDonald+

Mrs K. Spry

Mrs R. Payne

House Staff

Ms S. Naylor+

Ms M. Steve

Mrs I. Tsiflidis

Mr K. Tsiflidis

Mrs L. Young

Parent Adviser to the Hearing Impaired

Ms J. Ryan**

* Acting Charge Nurse

+ Resigned

Study Leave

^ Maternity Leave

** Employment transferred

Tweddle Child & Family Health Service

Life Governors

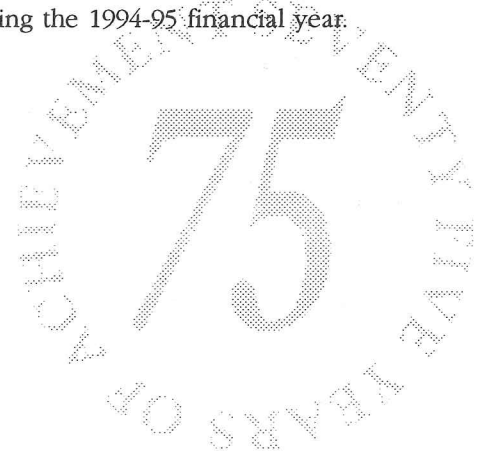
Miss E.M. Angliss, M.B.E.	Miss I. Brennan
Mrs L. Charlton	Mrs A. Downe
Mr K. Hambly	Mrs P.M. Harbeck
Mrs E. Lambert	Mr A.J. Mangan
Mrs A.J. Mangan	Mrs J. Mercer
Mrs T. Mounsey	Mrs J. Price
Mrs G. Redman	Mrs W. Stephens
Miss I. Stevenson	

Mrs Ellen O'Connell, a Life Governor for three years, passed away recently. Our condolences are extended to her family.

Legislative Changes

Drugs, Poisons and Controlled Substances (Amendment) Act 1994
Employee Relations (Amendment) Act 1994
Equal Opportunity Act 1995
Financial Management (Amendment) Act 1994
Financial Management and Audit Acts (Amendment) Act 1995
Health Acts (Amendment) Act 1995
Health Services (Amendment) Act 1995
Health Services (Metropolitan Hospitals) Act 1995
Infertility Treatment Act 1995
Medical Practice and Nurses Acts (Amendment) Act 1995
Superannuation Acts (Further Amendment) Act 1994
Superannuation Acts (General Amendment) Act 1995
Therapeutic Goods (Victoria) Act 1994

The Medical Practitioners Act 1970 was repealed during the 1994-95 financial year.



**Tweddle Central Auxiliary
66th Annual Report 1994-1995**

On behalf of the Tweddle Central Auxiliary, we have much pleasure in presenting the 66th Annual Report covering the year ending the 30th June, 1995. The Annual Meeting of the Tweddle Child and Family Health Service was held in October, 1994 and the guest speaker was Mr Paul Hede, Architect.

Our monthly meetings have been well attended, with an average of eleven present. We welcome a new member, Nancy Bartlett. Members who opened their homes to us were May Angliss, Eunice Lambert, Phil Harbeck, Joan Mercer and Jean Price. We thank them sincerely for their hospitality.

Sadly, during the year we reported the deaths of Betty Hassold's mother, Val Gilmour, Marion Ashley, Dulcie Tuppen, Di Gibson's father, Win Clark's son and Jean Brunning, who had served Tweddle for many years and gave extremely generous support.

Our functions resulted in a contribution of \$1,000 in August. Due to the major refurbishment of Tweddle Child and Family Health Service buildings, we have appropriated \$3,500 to equip the Infant Formula Room.

A Play Reading & Luncheon at the home of Mrs Mary Economou was a great success. "Actors" of the Auxiliary made the play a most entertaining comedy. Our thanks to Mrs Joan Mercer for the production and her never ending patience. Two Trak Theatre luncheons were held. In October, at Di Gibson's home "Greystones" at Bacchus Marsh, a luncheon and garden viewing delighted our members and their guests.

Our November meeting was followed by a luncheon and a jewellery, Buckle & Belt display by Mrs Anthea Dickson.

The first gathering of 1995 was held at Miss Iris Williams' home on Doncaster. Iris with her expert catering experience prepared all the exquisite fare and let us share the use of her treasured china, silverware and crystal. Thank you Iris! it was a memorable day and raised over \$500.

We are indebted to our many donors, particularly May Angliss, Eunice Lambert and Iris Williams. We would also like to recognise the Jean Littlewood Combined Charities Award and we thank Avis Lock for the co-ordination of our members who participated in their functions.

In January the Hon. Marie Tehan, Minister for Health, addressed a meeting for the Redevelopment of the Sydney Street Facilities. Much to the delight of everyone concerned, Mrs Tehan announced the Government's generous grant of \$1.3M. Tweddle will need to raise the remaining \$400,000 required.

We record our thanks to the Honorary Treasurer, Mrs Win Clark, who has so ably kept our finances in order. Special thanks to Mr. Alan Mangan, our Honorary Auditor, for his valuable assistance. Mrs Jean Price, Honorary Vice President, has resigned from this office but is still continuing as Honorary Social Secretary. Jean you are very special!

We look forward to the year ahead. Several activities are planned and we trust that we can continue to raise funds with enthusiasm, happiness and friendship which has characterised our group since its inception.

LORIS M CHARLTON
President

SUSAN M DE RAVIN
Honorary Secretary

Tweddle Child & Family Health Service

Tweddle Central Auxiliary

Income and Expenditure Statement for the year ended 30th June 1995

Income	\$	Expenditure	\$
Cr. Balance at Bank 01.07.94	218.92		
Film Luncheons Trak Theatre August, 1994 Widow's Peak 499.00 April, 1995 Deadly Advice 530.00	1,029.00	Film Luncheons Trak Theatre August, 1994 Widow's Peak 232.50 April, 1995 Deadly Advice 240.00	472.50
Luncheon at home of Mrs Economou	625.00		
Luncheon at home of Mrs Gibson	1,200.00		
		Tweddle Child & Family Health Service	1,000.00
Luncheon at home of Mrs Charlton	270.00		
Luncheon at home of Miss Williams	630.00	Miss I Williams	120.00
Donations other than fundraising functions	1,190.00	Sundry Expenses	34.00
Bank Interest	34.23	Cr Balance at Bank 30.06.95	3,570.00
	<u>5,197.15</u>		<u>5,197.15</u>

Audited and found correct.

ALAN J. MANGAN
Honorary Auditor

Tweddle Child and Family Health Service

Annual Financial Statements

*Including notes to and forming part
of the Financial Statements*

1994-95

Tweddle Child & Family Health Service
REVENUE AND EXPENSE STATEMENT FOR THE YEAR ENDED 30 JUNE 1995

	Note	Total 1994-95 \$	Total 1993-94 \$
OPERATING REVENUE PROVIDING FUND INFLOWS			
<u>Services supported by Health Services Agreement</u>			
Government grants			
-Hospital	2	937,200	849,600
-Footscray / Sunshine Child and Family Health Service	2	1,967	23,605
Indirect contributions by H&CS	3	14,876	15,197
Patient fees	4	407,228	520,304
Interest		4,933	7,609
Other revenue	5	7,366	18,553
		<hr/>	<hr/>
		1,373,570	1,434,868
<u>Services supported by Hospital and Community Initiatives</u>			
Rental		6,878	16,986
Interest		47,221	44,224
Other revenue	6	5,107	602
		<hr/>	<hr/>
TOTAL OPERATING REVENUE PROVIDING FUND INFLOWS		1,432,776	1,496,680
LESS OPERATING EXPENSES REQUIRING FUND OUTFLOWS			
<u>Services supported by Health Services Agreement</u>			
Direct patient care		796,905	795,179
Diagnostic & medical support services			
-Hospital		24,035	35,331
-Footscray / Sunshine Child and Family Health Service		3,679	24,106
Administration and quality assurance		255,012	275,333
Engineering & maintenance		47,195	51,671
Domestic and catering services		117,856	127,611
Corporate costs funded by H&CS		14,876	15,197
WorkCover		19,669	23,210
Superannuation		75,067	68,130
Audit Fees		3,400	2,350
		<hr/>	<hr/>
		1,357,694	1,418,118
<u>Services supported by Hospital and Community Initiatives</u>			
Rental property expenses		0	765
Other		16,099	10,862
		<hr/>	<hr/>
TOTAL OPERATING EXPENSES REQUIRING FUND OUTFLOWS		1,373,793	1,429,745

This statement should be read in conjunction with the accompanying notes.

Tweddle Child & Family Health Service

REVENUE AND EXPENSE STATEMENT FOR THE YEAR ENDED 30 JUNE 1995 (CONTINUED)

	Note	Total 1994-95 \$	Total 1993-94 \$
OPERATING SURPLUS PROVIDING FUND INFLOWS		58,983	66,935
Profit on sale of assets	22	16,493	0
Less Operating expenses not requiring fund outflows			
Depreciation	7 & 8	47,346	42,695
Long service leave	7	33,442	35,043
OPERATING (DEFICIT) NOT REQUIRING FUND OUTFLOWS		(64,295)	(77,738)
OPERATING SURPLUS (DEFICIT) PRIOR TO CAPITAL ITEMS		(5,312)	(10,803)
Income designated for Capital purposes			
Government Grants	2	300,898	-
Donations		22,572	-
Total income designated for Capital Purposes		323,470	0
Operating surplus (deficit) for the year		318,158	(10,803)
Retained surplus at 1 July		186,642	197,445
Transfers to Retained Earnings		684,903	-
Retained earnings at 30 June		1,189,703	186,642

This statement should be read in conjunction with the accompanying notes.

Tweddle Child & Family Health Service

BALANCE SHEET AS AT 30 JUNE 1995

	Note	Total 1994-95 \$	Total 1993-94 \$
EQUITY			
Contributed Capital reserves	1(n)	-	684,368
Endowment fund reserve		163,361	163,361
Research and development reserve		253,113	253,113
Asset revaluation reserve	9	767,594	767,594
		1,184,068	1,868,436
Retained earnings	1(n)	1,189,703	186,642
TOTAL EQUITY		2,373,771	2,055,078
LIABILITIES			
CURRENT LIABILITIES			
Bank overdraft		0	56,467
Creditors	10	123,595	42,187
Accrued expenses	11	2,756	2,404
Provision for employee entitlements	12	134,290	154,814
TOTAL CURRENT LIABILITIES		260,641	255,872
NON-CURRENT LIABILITIES			
Provision for employee entitlements	12	104,472	38,734
TOTAL NON-CURRENT LIABILITIES		104,472	38,734
TOTAL LIABILITIES		365,113	294,606
<u>TOTAL EQUITY AND LIABILITIES</u>		2,738,884	2,349,684
CURRENT ASSETS			
Cash at bank and on hand		100,438	22,993
Patient fees receivable	4	52,774	54,785
Stores	13	4,874	6,294
Debtors and accrued revenue	14	158,881	15,860
Investments	15	730,307	839,829
TOTAL CURRENT ASSETS		1,047,274	93,9761
NON-CURRENT ASSETS			
Land	16	590,274	560,000
Buildings	16	1,012,009	750,094
Plant & equipment	16	72,812	89,666
Motor vehicles	16	16,515	10,163
TOTAL NON-CURRENT ASSETS		1,691,610	1,409,923
<u>TOTAL ASSETS</u>		2,738,884	2,349,684

Tweddle Child & Family Health Service

CONSOLIDATED STATEMENT OF CHANGES IN EQUITY FOR THE YEAR ENDED 30 JUNE 1995

	Note	Contributed	Endowment Fund Reserve	Research and Development Reserve	Asset Revaluation Reserve	Retained Earnings Reserve	Total 1995	Total 1994
		\$	\$	\$	\$	\$	\$	\$
Balance at 1 July		684,367	163,361	253,113	767,594	186,642	2,055,077	1,257,917
Transfers to retained earnings								
July 1994 1(n)								
Capital		(684,367)				684,367	0	40,369
Long Service Leave						8,003	8,003	
Annual Leave, ADO, (on costs)						(7,467)	(7,467)	
Surplus (deficit) for the year						318,158	318,158	(10,803)
Transfers to reserves	9							767,594
Balance at 30 June		0	163,361	253,113	767,594	1,189,703	2,373,771	2,055,077

This statement should be read in conjunction with the accompanying notes.

Tweddle Child & Family Health Service
STATEMENT OF CASH FLOWS FOR THE REPORTING PERIOD ENDED 30 JUNE 1995

	Note	Total 1994-95 Inflows/ (Outflows) \$	Total 1993-94 Inflows/ (Outflows) \$
CASH FLOWS FROM OPERATING ACTIVITIES			
<u>Services Supported by Health Services Agreement</u>			
RECEIPTS			
Government Grants	19	883,785	792,628
Patient Fees		368,633	473,893
Interest		4,815	8,776
Other receipts		7,366	39,961
PAYMENTS			
Salaries & Wages		(997,966)	(1,034,414)
Other		(299,858)	(324,161)
 <u>Services Supported by Hospital and Community Initiatives</u>			
RECEIPTS			
Interest		48,768	47,611
Rental Property Income		8,910	16,986
Other Revenue		5,107	602
PAYMENTS			
Other		(16,099)	(11,627)
NET CASH GENERATED FROM OPERATING ACTIVITIES	18	13,461	10,255
 CASH FLOWS FROM INVESTING ACTIVITIES			
Payments for purchase of property, plant & equipment		(209,033)	(107,629)
Increase/Reduction in Investments		14,035	240,871
Proceeds from disposal of property, plant & equipment		16,493	-
Receipts from non-Government contributed equity		22,570	25,970
NET CASH USED IN INVESTING ACTIVITIES		(155,935)	159,212
 CASHFLOWS FROM GOVERNMENT			
Capital Grants		180,898	14,400
NET CASH PROVIDED BY GOVERNMENT		180,898	14,400
NET INCREASE/DECREASE IN CASH HELD		38,424	183,867
CASH AT 1 JULY		225,877	42,010
CASH AT 30 JUNE		264,301	225,877

NOTE 1. STATEMENT OF ACCOUNTING POLICIES

The financial statements of the Tweddle Child & Family Health Service have been prepared in accordance with the provisions of the Financial Management Act 1994. These requirements incorporate relevant accounting standards issued jointly by the Institute of Chartered Accountants in Australia and the Australian Society of Certified Practising Accountants.

(a) Accrual Basis

Except where otherwise stated, these financial statements have been prepared on the accrual basis whereby revenues and expenses are recognised when they are earned or incurred, and are brought to account in the period to which they relate.

(b) Historical Cost Basis

The financial statements have been prepared on the historical cost basis whereby assets are recorded at purchase price plus costs incidental to the acquisition cost and do not take into account changing money values nor the current cost of non-current assets (unless specifically stated).

(c) Rounding Off

All amounts shown in the financial statements are expressed to the nearest dollar.

(d) Investments

Investments are valued at cost and are classified between current and non-current assets based on the Hospital Board of Management's intentions at balance date with respect to timing of disposal of each investment. Interest revenue from investments is brought to account when it is earned.

(e) Depreciation

Assets with a cost in excess of \$1,000 are capitalised and depreciation has been provided on depreciable assets so as to allocate their cost (or valuation) over their estimated useful lives using the straight-line method. This depreciation charge is not funded by the Department of Health & Community Services Victoria.

Land and buildings are recorded at valuation made by the Valuer General on 28.4.94. Subsequent additions to buildings are at cost.

Buildings are depreciated in accordance with Australian Accounting Standard AAS4 "Depreciation of Non-Current Assets". The normal yearly depreciation charge attributable to buildings is reported in the revenue and expense statement.

Capital works in progress are not depreciated until works are completed and operational.

(f) Stores

Stores are valued at the lower of cost and net realisable value. Cost is determined principally by the first-in, first-out method.

(g) Employee Entitlements

Based on pay rates current at balance date, on costs such as Workcover and Superannuation are included in the calculation of leave provisions.

Long Service Leave

The provision for long service leave is determined in accordance with Accounting Standard AAS30. Generally, the entitlement under various awards becomes payable upon completion of ten years' service. The proportion of long service leave estimated to be payable within the next financial year is a current liability. The balance of the provision is classified as a non-current liability measured at the present value of the estimated future cash outflow arising from employee's services to date.

Wages and Salaries, Annual Leave and Accrued Days Off

Liabilities for wages and salaries, annual leave and accrued days off are recognised, and are measured as the amount unpaid at the reporting date in respect of employee's services up to that date.

Sick Leave

Sick leave liability is recognised if it is probable that sick leave expected to be taken in future reporting periods will be greater than entitlements which are expected to accrue in those periods.

(h) Footscray/Sunshine "Child and Family Health Service" C&FHS)

Allied Health Team is a Health & Community Services program operated from Tweddle Child and Family Health Service premises.

Tweddle supports this program by being the employing body of a staff member in the administration area.

(i) Donations

Donations are recognised as revenue when the cash is received.

(j) Fund Accounting

The hospital operates on a fund accounting basis and maintains two funds: Operating and Capital Funds. The hospital's Capital Fund includes unspent capital donations and receipts from fund-raising activities conducted solely in respect of this fund.

(k) Services Supported by Health Services Agreement and Services Supported by Hospital and Community Initiatives

The Activities classified as Services Supported by Health Services Agreement are substantially funded by the Department of Health & Community Services while Hospital and Community initiatives are funded by the Hospital's own activities or local initiatives.

(l) Revenue Recognition

Revenue is recognised at the time when goods are sold or services rendered.

(m) Non-Current Assets

The gross proceeds of sale of non-current assets have been included as operating revenue providing fund inflows while the written down value of the assets sold has been shown as an operating expenses not requiring fund outflows.

(n) Change in Accounting Policies

The accumulated balances of Contributed Capital have been transferred to retained earnings as a result of the new Directions of the Minister for Finance. All future capital receipts will be initially reported through the Revenue and Expense Statement.

(o) Comparative Information

On adoption of AAS30 Accounting for Employee Entitlements, an adjustment to the comparative figures for 1993/94 were restated. This resulted in an increase in employee entitlements.

(p) Asset Revaluations

The estimate of value of land and buildings is based on market value of the land and in use value of building improvements as they stand, considering their age and obsolescence.

NOTE 2 GOVERNMENT GRANTS

	1994-95	1993-94
	\$	\$
H&CS Ordinary Grants		
Hospital	937,200	849,600
Footscray/Sunshine		
C&F H.S.	1,967	23,605
	939,167	873,205
Total Operating Grants		
Capital Grants	300,898	-
	1,240,065	873,205
Total Grants Earned		

Included is an amount of \$31,400 which relates to a provisional end of year adjustment and is still owing by the Department of Health and Community Services.

Tweddle Child & Family Health Service

NOTES TO AND FORMING PART OF THE FINANCIAL STATEMENTS FOR THE YEAR ENDED 30 JUNE 1995

NOTE 3 INDIRECT CONTRIBUTION BY DEPARTMENT OF HEALTH & COMMUNITY SERVICES

Health & Community Services Victoria makes certain payments on behalf of the hospital. These amounts have been brought to account in determining the operating result for the year by recording them as revenue and expenses.

	1994-95	1993-94
	\$	\$
Health Computing Service charges	-	249
Industrial relations	-	235
Insurance	14,876	14,713
	<hr/>	<hr/>
Total	14,876	15,197
	<hr/> <hr/>	<hr/> <hr/>

NOTE 4 PATIENT FEES

	Patient fees raised		Patient fees receivable	
	1994-95	1993-94	1995	1994
	\$	\$	\$	\$
Inpatients	407,228	520,304	73,774	73,485
	<hr/> <hr/>	<hr/> <hr/>		
Less provision for doubtful debts			(21,000)	(18,700)
			<hr/>	<hr/>
Net patient fees receivable			52,774	54,785
			<hr/> <hr/>	<hr/> <hr/>

The Hospital charged fees in accordance with the Department of Health & Community Services Victoria directives.

	1994-95	1993-94
	\$	\$
Bad & Doubtful Debts	40,606	61,989
	<hr/> <hr/>	<hr/> <hr/>

NOTE 5 OTHER REVENUE - SERVICES SUPPORTED BY HEALTH SERVICES AGREEMENT

	1994-95	1993-94
	\$	\$
Bad debts recovered	1,148	-
Education	2,435	8,589
TAFE students	889	4,652
Other	2,894	5,312
	<hr/>	<hr/>
Total	7,366	18,553
	<hr/> <hr/>	<hr/> <hr/>

Tweddle Child & Family Health Service

NOTES TO AND FORMING PART OF THE FINANCIAL STATEMENTS FOR THE YEAR ENDED 30 JUNE 1995

NOTE 6 OTHER REVENUE - HOSPITAL AND COMMUNITY INITIATIVES

	1994-95	1993-94
	\$	\$
Sale of videos	4,784	-
Other	323	602
	-----	-----
Total	5,107	602
	=====	=====

NOTE 7 OPERATING EXPENSES

	Hospital	Footscray Sunshine C&FHS	Total 1994-95	Total 1993-94
	\$	\$	\$	\$
<u>Services supported by Health Services Agreement</u>				
Salaries	786,151	3,679	789,830	818,673
Salary Oncosts	220,445	-	220,445	209,816
Other	347,419	-	347,419	389,629
	-----	-----	-----	-----
Total expenses requiring Fund Outflows (per Revenue and Expense Statement)	1,354,015	3,,679	135,694	1,418,118
	-----	-----	-----	-----
Add Operating Expenses not requiring Fund Outflows				
Depreciation	47,346	-	47,346	42,695
Long Service Leave	33,442	-	33,442	35,043
Other	-	-	-	-
	-----	-----	-----	-----
Sub Total	80,788	-	80,788	77,738
	-----	-----	-----	-----
<u>Services supported by Hospital & Community Initiatives</u>				
Other	16,099	-	16,099	11,627
TOTAL EXPENSES	1,450,902	3,679	1,454,581	1,507,483
	=====	=====	=====	=====

Tweddle Child & Family Health Service

NOTES TO AND FORMING PART OF THE FINANCIAL STATEMENTS FOR THE YEAR ENDED 30 JUNE 1995

NOTE 8 DEPRECIATION AND AMORTISATION

	1994-95	1993-94
	\$	\$
Buildings	22,382	18,977
Plant & Equipment	20,583	18,366
Motor Vehicles	4,381	5,352
	47,346	42,695
	47,346	42,695

NOTE 9 TRANSFERS TO RESERVES

	1994-95	1993-94
	\$	\$
Asset Revaluation Reserve	0	767,594

Due to an upward valuation of land and buildings on 28.4.1994, \$767,594 was transferred to the asset revaluation reserve.

NOTE 10 CREDITORS & BORROWINGS

	Less than 1 Year	1 to 2 Years	2 to 5 Years	Greater than 5 Years	Total 1995	Total 1994
	\$	\$	\$	\$	\$	\$
Creditors*	123,595	-	-	-	123,595	42,187
	123,595	-	-	-	123,595	42,187
	123,595	-	-	-	123,595	42,187

In the year 1994/95 an amount of \$120,000 is owed by Tweddle C&FHS for capital redevelopment work. This represents a large proportion of this liability.

NOTE 11 ACCRUED EXPENSES

	1994-95	1993-94
	\$	\$
Other	2,756	2,404
	2,756	2,404
	2,756	2,404

Tweddle Child & Family Health Service

NOTES TO AND FORMING PART OF THE FINANCIAL STATEMENTS FOR THE YEAR ENDED 30 JUNE 1995

NOTE 12 EMPLOYEE ENTITLEMENT

	1995	1994
	\$	\$
● Current		
Long service leave	24,291	64,590
Accrued salaries & wages	14,810	12,196
Annual leave	94,014	77,127
Accrued days off	1,175	901
	134,290	154,814
● Non-current		
Long service leave*	104,472	38,734
Total	238,762	193,548

* In measuring present value a probability factor which varies in accordance with the number of years of service has been used in determining the retention rate for employees with a particular number of years of service.

NOTE 13 STORES

	1995	1994
	\$	\$
Pharmaceuticals	1,193	1,855
Domestic supplies	3,085	3,550
Administration stores	595	889
	4,874	6,294

NOTE 14 DEBTORS AND ACCRUED REVENUE

	Less than 1 year	Greater than 1 year less than 2 years	Greater than 2 years less than 5 years	Greater than 5 years	Total 1994-95	Total 1993-94
	\$	\$	\$	\$	\$	\$
Accrued interest - oper	1,393				1,393	1,276
Acc Govt Grant - oper	31,400				31,400	-
F/S Child & FHS - oper	-				4,918	
Accrued rent - cap	-				-	2,032
Accrued interest - cap	6,088				6,088	2,032
Acc Govt Grant - cap	120,000				120,000	-
Total accrued revenue	158,881	-	-	-	158,881	15,860

Tweddle Child & Family Health Service

NOTES TO AND FORMING PART OF THE FINANCIAL STATEMENTS FOR THE YEAR ENDED 30 JUNE 1995

NOTE 15 INVESTMENTS

	Operating Fund \$	Capital Fund \$	Total 1995 \$	Total 1994 \$
● Current				
Investments				
Bank bills	-	566,444	566,444	430,478
On call investment	65,922	97,941	163,863	259,351
Debentures	-	-	-	150,000
	65,922	664,385	730,307	839,829
Investment Income			1994-95	1993-94
			\$	\$
Interest				
On call investments & term deposits	4,934	47,221	52,155	51,833

NOTE 16 NON-CURRENT ASSETS

	Gross Valuation 1995 \$	Accum. Depreciation 1995 \$	Written Down Value 1995 \$	Written Down Value 1994 \$
<i>At Cost</i>				
Plant & Equipment	149,180	76,368	72,812	89,665
Motor Vehicles	19,010	2,495	16,515	10,163
Freehold land	30,274	-	30,274	-
Buildings	294,392	-	294,392	10,094
Total	492,856	78,863	413,993	109,922
<i>At Valuation*</i>				
Crown Land	310,000	-	310,000	310,000
Freehold Land	250,000	-	250,000	250,000
Buildings	740,000	22,382	717,617	740,000
Total	1,300,000	22,382	1,277,617	1,300,000

*The land and buildings were restated to valuations determined by Mr. B. Longmore, Registered Valuer, Office of the Valuer General, Victoria, as at 28th April, 1994.

The basis of valuation of land and buildings is based on market value of the land and in-use value of building improvements as they stand, considering their age and obsolescence.

Tweddle Child & Family Health Service

NOTES TO AND FORMING PART OF THE FINANCIAL STATEMENTS FOR THE YEAR ENDED 30 JUNE 1995

NOTE 17 RECONCILIATION OF CASH

For the purpose of the statement of cash flows, the Hospital considers cash to include cash on hand, in banks and investments in money market instruments which includes: petty cash, bank or financial institutions deposits and investments (at call or highly liquid and readily convertible to cash within 24 hours) which an entity uses in its cash management function on a day to day basis.

	1995	1994
	\$	\$
Operating Fund		
Cash at bank and on hand	5,541	-
Cash Management Account	65,922	141,579
Bank Overdraft	-	(56,217)
Capital Fund		
Cash at bank and on hand	94,897	22,743
Cash Management Account	97,941	117,772
	<hr/>	<hr/>
Cash at 30 June	264,301	225,877
	=====	=====

NOTE 18 RECONCILIATION OF NET CASH USED IN OPERATING ACTIVITIES TO OPERATING RESULT

	1995	1994
	\$	\$
Operating Surplus for the year	318,157	(10,803)
Less income designated for capital purposes	323,469	-
Operating Deficit prior to capital items	(5,312)	(10,803)
Depreciation	47,346	42,695
Long service leave expense	45,750	35,043
Long service leave paid	-	(14,926)
Profit on fixed asset sale	(16,493)	-
Increase/Decrease in accrued expenses	352	8,366
Increase/Decrease in creditors	81,408	(72,515)
Decrease/Increase in patients' fees	2,011	(1,472)
Decrease/Increase in debtors	(143,021)	23,985
Increase/Decrease in stores	1,420	(119)
	<hr/>	<hr/>
Net cash used in Operating activities	13,461	10,254
	=====	=====

NOTE 19 GOVERNMENT GRANT RELATING TO PRIOR YEAR

Includes an amount of \$31,400 owing to Tweddle by H & CS (1993/94 prepaid grant \$106,700), to finalise hospital funding based on performance during the 1994/95 year, under the Health Service Agreement.

Tweddle Child & Family Health Service

NOTES TO AND FORMING PART OF THE FINANCIAL STATEMENTS FOR THE YEAR ENDED 30 JUNE 1995

NOTE 20 CAPITAL COMMITMENTS

Tweddle Child and Family Health Service is currently undertaking a redevelopment project located at Sydney Street, Footscray. The total capital commitment for this project is \$1,462,300. During the financial year 1995/96 our commitment is \$1,173,901 of which the Department of Health and Community Services has agreed to pay \$1,011,601 (the shortfall in funding being \$162,300). This development work is expected to be completed in the 1995/96 financial year.

NOTE 21 SUPERANNUATION

This entity contributes to the Hospitals Superannuation Board. Contributions made during this financial year were \$75,067. There were no amounts outstanding in respect of the financial year. The basis for calculating superannuation payable to the Hospital Superannuation Board is in accordance with the Hospital Superannuation Act 1988 and the State Superannuation Act 1988. There are no loans existing from any Superannuation Fund.

NOTE 22 PROFIT OR LOSS ON SALE OF NON-CURRENT ASSETS

	1994-95	1993-94
	\$	\$
Profit on Sale of Motor Vehicles	16,493	-

NOTE 23 DIRECTOR RELATED DISCLOSURES

(a) Members of the Board of Management

Mr P. Angliss
Mr I. Broadway
Ms P. Digby re-appointed Nov 1994
Ms L. Glanville re-appointed Nov 1994
Ms L. Hazelton
Dr N. Hocking
Mr G. Jasper
Mr R. Jones
Ms J. Launder
Ms D. McGregor re-appointed Nov 1994
Mr I. Roberts re-appointed Nov 1994
Ms L. Soong appointed Nov 1994

(b) Remuneration

Members of the Board of Management all hold honorary positions.

(c) Retirement Benefits

There are no retiring benefits provided to members of the Board of Management.

(d) Other Transactions of Board of Management Related Entities

There were no transactions with Board of Management related entities.

(e) Other Receivables from and Payables to Board of Management Members

No amounts remain payable or receivable to any Board of Management Member.

Certification

In our opinion the Report of Operations and the Financial Statements of the Tweddle Child & Family Health Service comprising statement of revenue and expense, balance sheet, consolidated statement of changes in equity, statement of cash flows and notes to the Financial Statements have been prepared in accordance with the provisions of the Financial Management Act 1994 and the Directions of the Minister for Finance - Part 9 Reporting Provisions.

In our opinion the Financial Statements present fairly the financial transactions for the year ended 30 June 1995 and the financial position as at that date of the Tweddle Child & Family Health Service.

At the date of signing the Financial Statements we are not aware of any circumstances which would render any particulars included in the statements to be misleading or inaccurate.

Mr G. Jasper
Chairperson (on behalf of the Board of Management)

Mr R. Jones
Member (on behalf of the Board of Management)

Ms B. Hassold
Chief Executive Officer

Ms E. Gray
Principal Accounting Officer

Dated the 4th day of September 1995.
(Melbourne)



**VICTORIAN
AUDITOR-
GENERAL'S
OFFICE**

*Auditing in the
Public Interest*

Auditor-General's Report

Audit Scope

The accompanying financial statements of the Tweddle Child and Family Health Service for the year ended 30 June 1995, comprising revenue and expense statement, balance sheet, consolidated statement of changes in equity, statement of cash flows and notes to the financial statements, have been audited. The members of the Service's Board of Management are responsible for the preparation and presentation of the financial statements and the information they contain. An independent audit has been carried out in order to provide an audit report on the financial statements as required by the *Audit Act 1994*.

The audit has been conducted in accordance with Australian Auditing Standards to provide reasonable assurance as to whether the financial statements are free of material misstatement. The audit procedures included an examination, on a test basis, of evidence supporting the amounts and other disclosures in the financial statements, and the evaluation of accounting policies and significant accounting estimates. These procedures have been undertaken to form an opinion as to whether, in all material respects, the financial statements are presented fairly in accordance with Australian Accounting Standards and other mandatory professional reporting requirements and comply with the requirements of the *Financial Management Act 1994*, so as to present a view which is consistent with my understanding of the financial position of the Tweddle Child and Family Health Service and the results of its operations and its cash flows.

The audit opinion expressed on the financial statements has been formed on the above basis.

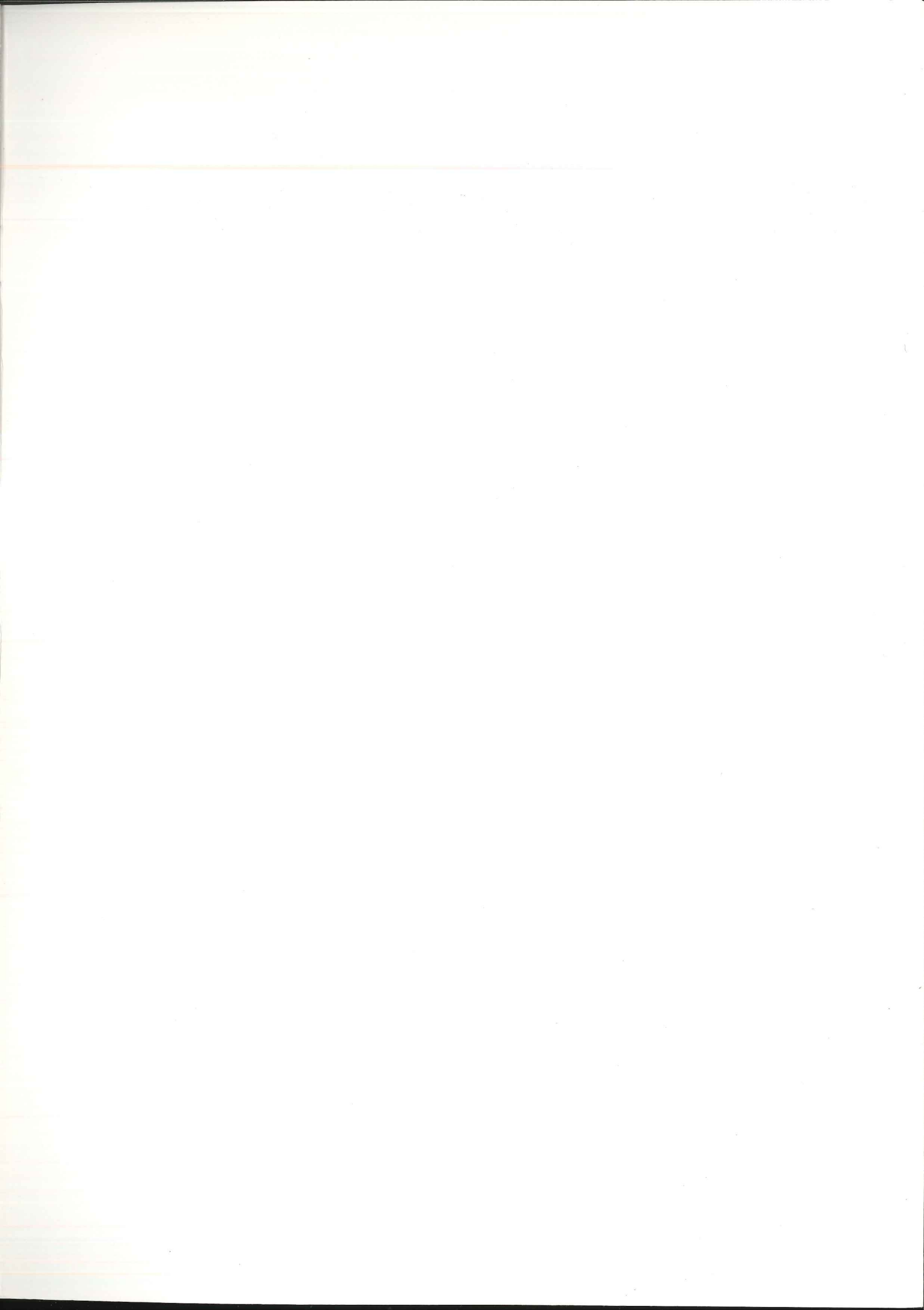
Audit Opinion

In my opinion, the financial statements present fairly the financial position of the Tweddle Child and Family Health Service as at 30 June 1995 and the results of its operations and its cash flows for the year ended on that date in accordance with Australian Accounting Standards and other mandatory professional reporting requirements and comply with the requirements of the *Financial Management Act 1994*.

C.A. BARAGWANATH
Auditor-General

MELBOURNE
18 / 9 / 1995

Tweddle Child & Family Health Service



HISTORY

- LONG < WH
FEC.

- SOCY ^{vic} W/- + CH

- TWEDDLE SET UP IN 1923

LAND + BUILDINGS DONATED BY MR J. TWEDDLE + FEC + FUND RAISING

PRIVATE BUT NON PROFIT MAKING

- AIM HEALTH, EDⁿ-PARENT-CLIENTS - FAMILIES - NUTⁿ HYGIENE

50-60 - LOST < DISABILITIES
PRE ADOPTION

FULL CIRCLE - 2 SERVICES ^{JRV} _{OSP?}

Access IBN.

PEOPLE WHO USE TWEDDLE + FOR WHAT REASONS